

TEMPORARY USE IN URBAN CONTEXT  
AS A TOOL TO ENHANCE PUBLIC SPACES

A THESIS SUBMITTED TO  
THE GRADUATE SCHOOL OF NATURAL AND APPLIED SCIENCES  
OF  
MIDDLE EAST TECHNICAL UNIVERSITY

BY  
AYSU GÜRMAN

IN PARTIAL FULFILLMENT OF THE REQUIREMENTS  
FOR  
THE DEGREE OF MASTER OF ARCHITECTURE  
IN  
ARCHITECTURE

AUGUST 2020



Approval of the thesis:

**TEMPORARY USE IN URBAN CONTEXT  
AS A TOOL TO ENHANCE PUBLIC SPACES**

submitted by **AYSU GÜRMAN** in partial fulfillment of the requirements for the degree of **Master of Architecture in Architecture, Middle East Technical University** by,

Prof. Dr. Halil Kalıpçılar  
Dean, Graduate School of **Natural and Applied Sciences**

Prof. Dr. F. Cânâ Bilsel  
Head of the Department, **Architecture**

Assoc. Prof. Dr. Ela Alanyalı Aral  
Supervisor, **Architecture, METU**

**Examining Committee Members:**

Prof. Dr. Celal Abdi Güzer  
Architecture, METU

Assoc. Prof. Dr. Ela Alanyalı Aral  
Architecture, METU

Assoc. Prof. Dr. Ahenk Yılmaz  
Architecture, Yaşar University

Date: 25.08.2020

**I hereby declare that all information in this document has been obtained and presented in accordance with academic rules and ethical conduct. I also declare that, as required by these rules and conduct, I have fully cited and referenced all material and results that are not original to this work.**

Name, Last name : Aysu Gürman

Signature:

## **ABSTRACT**

### **TEMPORARY USE IN URBAN CONTEXT AS A TOOL TO ENHANCE PUBLIC SPACES**

Gürman, Aysu  
Master of Architecture, Architecture  
Supervisor : Assoc. Prof. Dr. Ela Alanyalı Aral

August 2020, 151 pages

Public space provides both a physical and social environment for a variety of activities that are performed by many people. It is the place for public life initiating social interaction. The economic and technological developments have been accelerating the rhythms of public life with the changes in social and cultural aspects of life. This condition has lead this study to search for possibilities for enhancement of public space with the concept of temporality.

The research elaborates on temporary use characteristics for the employment of temporary use by architects, urban designers, and actors in cities for enhancing public space. Exploring its main characteristics, the study determines the conceptions through which temporary uses can be evaluated, thus parameters are extracted from the literature survey of public space and temporary use. The main parameters temporary use introduces are inclusivity, sociability, vitality, flexibility, multiplicity, discovery, and participation. Examples are examined with these parameters to explore the potentials of temporary use to public spaces. Considering the changes temporary use offer for public space, examples are mainly divided into two: temporary uses instigated by physical properties (temporary structures, temporary design of urban space, and permanent design of urban space initiating

temporary activities) and temporary uses instigated by activities (event organizations). Depending on the findings, the study indicates that temporary use in urban context becomes a tool to enhance public spaces by increasing the number of people in and around the space who perform diverse activities at different times throughout the day, week or year.

Keywords: Public Space, Temporary Use, Temporality

## ÖZ

### **KAMUSAL MEKÂNI DESTEKLEMELİK İÇİN BİR ARAÇ OLARAK KENTSEL BAĞLAMDA GEÇİCİ KULLANIM**

Gürman, Aysu  
Yüksek Lisans, Mimarlık  
Tez Yöneticisi: Doç. Dr. Ela Alanyalı Aral

Ağustos 2020, 151 sayfa

Kamusal mekân, birçok kişi tarafından gerçekleştirilen çeşitli faaliyetler için hem fiziksel hem de sosyal bir ortam sağlar. Bu özelliğiyle kamusal mekân, sosyal etkileşimi başlatan kamusal yaşam yeridir. Ekonomik ve teknolojik gelişmeler, hayatın sosyal ve kültürel yönlerindeki değişimlerle birlikte kamusal yaşamın ritmini hızlandırmaktadır. Bu durum, bu çalışmayı zamansallık kavramıyla birlikte kamusal mekânın zenginleştirilmesi için olanakları araştırmaya yönlendirmiştir.

Araştırma, mimarlar, kentsel tasarımcılar ve kentlerdeki aktörler tarafından geçici kullanımın kullanılmasını sağlamak için kamusal mekânı destekleyen geçici kullanım özelliklerini ayrıntılı olarak ele almaktadır. Kamusal mekânı destekleyen geçici kullanımların değerlendirilebileceği kavramları anlamak için kamusal mekân ve geçici kullanım literatür araştırmasından parametreler çıkartılmıştır. Ana parametreler; kapsayıcılık, sosyallik, canlılık, esneklik, çokluk, keşif ve katılım olarak belirlenmiştir. Geçici kullanımın kamusal alana katkılarını incelemek için farklı örnekler, bu parametrelerle incelenmiştir. Geçici kullanımın kamusal alan için sunduğu değişiklikler göz önünde bulundurulduğunda, örnekler temelde ikiye ayrılır: fiziksel özelliklerle desteklenen geçici kullanımlar (geçici yapılar, kentsel mekânın geçici tasarımı veya geçici aktiviteleri başlatan kalıcı tasarımı) ve aktivitelerle desteklenen geçici kullanımlar (etkinlik organizasyonları). Bulgulara

baęlı olarak, alıřma, kentsel baęlamda geici kullanımın, mekânın iinde ve evresinde, gnn, haftanın ve yılın farklı zamanlarında eřitli etkinlikler gerekleřtiren kullanıcı sayısını artırarak kamusal mekânları zenginleřtirmek iin bir ara haline geldięini gstermektedir.

Anahtar Kelimeler: Kamusal Alan, Geici Kullanım, Geicilik

To my beloved parents and sister

## ACKNOWLEDGMENTS

First and foremost, I would like to express my wholehearted and deepest gratitude to my supervisor Assoc. Prof. Dr. Ela Alanyalı Aral. I am grateful to her for her understanding, encouragement, and guidance throughout my graduate study. She guided me not only for my thesis but also for my decisions in life. I feel extremely lucky and privileged to have such a kind-hearted and insightful advisor.

I would like to thank the members of the examining committee, Prof. Dr. Celal Abdi Güzer, and Assoc. Prof. Dr. Ahenk Yılmaz, for their valuable contributions and helpful suggestions.

I am deeply grateful to my parents Şebnem Gürman and Memduh Gürman for their endless care and unconditional love. I am lucky to have my beloved sister Ayça Gürman, the greatest gift of my life and I am thankful to her for her joy that always cheers me up.

Without them, I will not be the person I am today. This thesis would never be accomplished without the love, trust, and support of them.

Finally, I am thankful to my high school friends Ekin Kızılırmak, Naz Yetimoğlu, Özge Boyacıoğlu, Seda Mısırlıoğlu, Oğul Üner and Beren Tunçalp for their invaluable friendship, endless support and motivation.

## TABLE OF CONTENTS

ABSTRACT.....	v
ÖZ .....	vii
ACKNOWLEDGMENTS .....	x
TABLE OF CONTENTS.....	xi
LIST OF TABLES .....	xiv
LIST OF FIGURES .....	xv
CHAPTERS	
1 INTRODUCTION .....	17
1.1 Problem Definition.....	17
1.2 Aim of The Study.....	18
1.3 Methodology .....	20
1.4 Structure of The Thesis .....	21
1.5 Theoretical Basis for The Relation Between Space and Time.....	22
2 PUBLIC SPACES AND TEMPORARY USE.....	27
2.1 Definition of Public and Public Space .....	27
2.2 Two Interweaving Attributes of Public Space .....	33
2.2.1 Physical Properties of Public Space.....	34
2.2.2 Activities in Public Space .....	37
2.2.3 The Interaction Between Physical Properties and Activities.....	44
2.3 Temporality in Urban Context .....	47
2.4 The Contextual Properties of Public Space.....	52
2.5 Definition of Temporary Use .....	54

2.6	Key Terms Evoking The Concept of Temporary Use .....	58
2.7	Context of Temporary Use .....	63
2.8	Definers of Temporary Use .....	64
2.8.1	Time.....	64
2.8.2	Space.....	65
2.8.3	Type of Occurrence .....	66
2.8.4	Actors .....	67
2.9	Categorization of Temporary Use.....	69
3	THE CONTRIBUTION OF TEMPORARY USE ON PUBLIC SPACES ....	75
3.1	Spatial and Temporal Conditions for Temporary Use.....	75
3.1.1	The Notion of Space and Time in Case of Depletion.....	75
3.1.2	The Notion of Space and Time in Case of Repletion .....	76
3.2	The Relation Between Temporary Use and Public Space .....	77
3.3	Parameters of Contextual Properties of Public Space .....	79
3.4	Parameters of Temporary Use Enhancing Public Space .....	81
3.4.1	Inclusivity .....	82
3.4.2	Sociability.....	83
3.4.3	Vitality .....	84
3.4.4	Flexibility .....	85
3.4.5	Multiplicity .....	86
3.4.6	Discovery.....	87
3.4.7	Participation.....	87
4	EVALUATION OF EXAMPLES OF TEMPORARY USES .....	89
4.1	Selection and Analysis of Examples for Temporary Use.....	89

4.1.1	Change in Physical Properties Through Temporary Use.....	92
4.1.2	Change in Activities Through Temporary Use .....	115
4.2	Discussion on Various Examples for Temporary Use .....	122
5	CONCLUSION.....	131
5.1	General Proceeding and Findings of the Study.....	131
5.2	Future Projections of the Study .....	136
6	REFERENCES .....	139

## LIST OF TABLES

### TABLES

Table 2.1 Key Concepts Evoking an Understanding of Temporary Use .....	61
Table 3.1 Parameters of Temporary Use to Enhance Public Space .....	81
Table 4.1 The Set of Criteria Retrieved from Parameters .....	91
Table 4.2 Information and Properties of Temporary Structures Examples .....	99
Table 4.3 Information and Properties of Temporary Design of Urban Spaces Examples .....	106
Table 4.4 Information and Properties of Permanent Design of Urban Spaces.....	114
Table 4.5 Information and Properties of Event Organizations Examples .....	121
Table 4.6 The examples of temporary uses referring to parameters at different levels.....	123
Table 4.7 The contribution of Temporary Uses on Public Spaces .....	128

## LIST OF FIGURES

### FIGURES

Figure 4.1 Convergence Stop, İstanbul, Turkey .....	94
Figure 4.2 Sky Garden, Ortaköy, İstanbul .....	95
Figure 4.3 TANDEM, Madrid, Spain .....	96
Figure 4.4 Add-On 20 Höhenmeter, Vienna, Austria .....	97
Figure 4.5 Folly for A Flyover, London, England .....	98
Figure 4.6 SuperKOLMEMEN, Helsinki, Finland, 2016 .....	99
Figure 4.7 Union Street Urban Orchard, London, England .....	101
Figure 4.8 Davis Farmers' Market, Davis, California, USA .....	103
Figure 4.9 Place au Changement Public Plaza, Saint-Etienne, France .....	104
Figure 4.10 Granby Park, Dublin, Ireland .....	105
Figure 4.11 Lent Space, New York .....	106
Figure 4.12 Parc de La Villette, Paris, France .....	109
Figure 4.13 Superkilen, Copenhagen, Denmark .....	110
Figure 4.14 Bostanlı Footbridge and Sunset Lounge, İzmir, Turkey .....	111
Figure 4.15 Hoyt Street Garden, Brooklyn, NY, USA .....	113
Figure 4. 4.16 Park 'n' Play, Copenhag, Denmark .....	114
Figure 4.17 Park(ing) Day in 2005 (left) and 2007 (right) in San Francisco, CA .....	117
Figure 4.18 Malta Festival Ponzan, Poland .....	118
Figure 4.19 Whispering Dishes, San Francisco, USA .....	120
Figure 4.20 Paris Plage Event, Paris, France .....	121
Figure 5.1 The two interweaving attributes of public space .....	132
Figure 5.2 Spatial and temporal conditions for the realization of temporary use .....	132
Figure 5.3 Temporary uses physical properties and activities .....	133



## **CHAPTER 1**

### **INTRODUCTION**

#### **1.1 Problem Definition**

Public spaces provide the physical and social environment that creates a variety of activity opportunities for individuals shaped according to the expectations and needs of the society. They are the stages of public life where different people having different perspectives encounter and interact. In its common sense, they are the places for public communication and social interaction.

With the changes in social and cultural aspects of life as an outcome of economic and technological developments, public spaces are always transformed both physically and socially. This leads public spaces to be subjected to a continuous transformation; they are redeveloped, regenerated, or revitalized.

The technological and economic developments accelerate the beats of social life through globalization, industrial production, and innovations in the areas of communication, transportation, and information. The social and cultural aspects of life have been influenced by the changes in all these areas. The developments change the understanding of mobility, diversity, and connectivity. In that regard, the way people perceive their life, and the patterns of their behavior are also changed. Madanipour (2017, 72) asserts that "... tangible products are replaced by intangible ones, factories by flexible offices, mass routines by diversified patterns of work and life, all demanding and shaping new forms of temporality." This results in the emergence of a sense of temporality in the search for new possibilities for more flexible relationships between space, architect, and user.

All these developments speed up the rhythms of life and so the urban rhythms of public spaces. As a result, public spaces should keep up with this situation by offering and initiating an innovative urban understanding which leads to the search for the concepts of flexibility, diversity, and possibility. They should perform this convenience to changing patterns and conditions both physically and socially. The public spaces and the contemporary public life probe their spatial and temporal dimensions by the embodiment of the concepts of space and time within the continuous transformation of today's' cities. At this point, the concept of temporary use comes into prominence as an alternate urban understanding with its characteristics of adapting to the ever-changing space with various activities performed by many people.

## **1.2 Aim of The Study**

The study was inspired by the people using urban spaces temporarily through their daily activities such as the casual and arranged meetings, rituals, historic celebrations, markets and vendors, children's play, entertainments or just gazing at the passing scene. Some uses are planned and designed by many different actors whereas some of them are found by their users to accommodate their needs and desires. These are the temporary uses that may vary from design studios in vacant shops to pop-up shows, from street festivals to beaches in the center of cities, from mobile structures to temporary constructions and temporary gardens. Regardless of whether they are designed or not, they can take place in spaces where diverse use is feasible.

At that point, it is valuable to probe whether temporary use could ever be considered as an urban understanding for the enhancement of public spaces. The study mainly focuses on the potentials of designed temporary uses. The spontaneous uses playing a crucial role in the vitality in the city are intentionally excluded in the study because it is a concept that needs a comprehensive discussion separately. Also, it is aimed to create a set of parameters for architects, urban designers, and potential actors having

an intention to make alive and vital public spaces. This study may become an inspiration for them to rethink public space with the potentials of the temporary uses offering social interaction. In this way, the study may reveal what temporary uses should involve designing for the enhancement of public spaces. In this framework, public spaces become meaningful spaces by providing physical and social ground for social interaction and connection:

Meaningful spaces are those that allow people to make strong connections between the place, their personal lives, and the larger world... A continuously used public space with its many memories can help anchor one's sense of personal continuity in a rapidly changing world (Carr et al.,1992, 20).

The temporary changes in physical properties and activities in public spaces have the potential to enhance the urban experience in society by providing a physical and social ground for interaction and connection. Temporary uses also have the potential to contribute to the construction of shared meaning and memory. They define meanings and memories, which may be multiple and diverse, for people about their experience with the place. Although public life and conditions are restored, people create memories and keep them in their minds. The shared forms of meaning, experience, and memory provide users to have an attachment to space.

In this sense, the thesis aims to reveal temporary use as an urban intention to enhance public spaces through injecting short-term activities for diversity and social interaction. Bishop and Williams (2012) emphasize temporary land use as an intentional phase concerning the intention of the user, developer, or planner. By considering this, temporary use is a way to intentionally explore the potentiality of public spaces for defining connection and interaction between people, and people, and urban environment.

The temporary use is analyzed considering the shift from the urban understanding with formal and commonplace public spaces to the recognition of rethinking public spaces with less formal, more temporary, and diverse uses. The concept may be situated in an area where the new possibilities of public spaces are searched.

Temporary use as a flexible method of spatial production (Madanipour, 2018) is evaluated many times with the commercialization of urban life and experience. Some examples, such as the increasing number of festivals and marathons in cities for marketing and attracting attention, show how the temporary events are affected by the commercial character of the urban society. However, temporary use can be handled in many ways offering some creative potentials. It is significant to probe different ways to change the meaning of temporary use from commercial to socio-cultural meaning. It brings about opportunities for social interaction by constructing a completely different meaning to public spaces through activities. This provides to question the existential condition, experiment with ideas and practices, and innovating new ideas and alternative practices (Madanipour, 2017).

### **1.3 Methodology**

The use of space defines the relationship between the human being and the physical environment. In this study, the use of space is framed with designed temporary use. It is valuable to probe the environments that have a possibility to be physically and socially structured for endowing temporary use through different interventions. In this process, the concept of temporary use should not merely be considered in a functional manner; it should also be considered in a boarder sense referring to a set of social and cultural relations for the enhancement of public spaces. Basically, the study examines the potential interaction between temporary use and public space.

Firstly, the theoretical framework of public space is put forward to describe the two differing and interweaving attributes for the understanding of public space: physical properties and activities. Secondly, the concept of temporary use is examined within a broad theoretical framework including its definition, definers, context, varying categorizations, and the proper spatial and temporal conditions. Following the theoretical discussions on public space and temporary use, the study continues with the discovery of the contribution of temporary use to public space through diverse examples of temporary uses. For the example analysis, the parameters of temporary

use are determined and explained separately. Besides these parameters, the parameters of the contextual properties of public space are also briefly introduced. However, they are not completely included in the framework of the study since they need a comprehensive study and investigation to be discussed. Then, the examples are examined according to the parameters to explore their contribution to different projects. Special attention was paid to the selection of examples that refer to the parameters defined in the study and provide an enhancement of public space through these parameters. There is no specification for the scale and shape of the urban space in the selection because the focus is much more on the way temporary use enhances the public space in cities. As a result, an understanding of the relation between different parameters and their contributions to public space are investigated.

#### **1.4 Structure of The Thesis**

The present thesis is composed of five chapters. In the first chapter, after defining the problem and stating the aim and methodology of the study, the theoretical basis for the conceptualization of space and time is introduced to express their integral relationship. The explanation of this relationship provides how temporary use inherently position itself in the notions of space and time. In the second chapter, the concepts of public and public space are defined. This brings two attributes of public space to fore: physical properties and activities. By considering these interweaving attributes of public space, the issue of temporality is outlined in the urban context. Following this, the contextual properties of public spaces are briefly examined with its components of location, form qualities, and existing use patterns. Then, in the remaining part of the chapter, the focus has been directed to the concept of temporary use. It is defined and introduced with many different key concepts evoking an understanding of temporary use. Its context, definers, and different categorizations are made by scholars. The third chapter starts with the spatial, and temporal conditions for the realization of temporary use are explained and continues with the discussion on the relation between temporary use and public space. The parameters

of contextual properties are expressed in short to give a general essence about their role and contribution to the realization of temporary uses. After that, the parameters of temporary use introduced are discussed to depict the conceptions through which the examples of temporary uses are evaluated. In the fourth chapter, how the examples are selected and evaluated through the set of criteria extracted from parameters are explained. Then, different examples that are divided into two in relation to the changes they offer are analyzed. This chapter concludes with a discussion about the contribution of examples. Consequently, in the fifth chapter, the conclusion part of the study will present a general outline for the general proceedings, and findings of the study, and the future projections of the study.

## **1.5 Theoretical Basis for The Relation Between Space and Time**

To study temporary use and its role to enhance public spaces, it is essential to analyze the concepts of space and time through the historical change in their meaning and understanding. A theoretical basis for the concepts is put forward to investigate how they are related to each other and how they work together.

Approaches to the nature of time and space, which has been questioned throughout the ages, portray absolute, or relational conceptions and interpretations of time and space.

According to the substantial and absolute conception of time, time is regarded as “an empty container into which things and events may be placed; but it is a container that exists independently of what (if anything) is placed in it” (Markosian, 2016). The idea of absolute time as an independent entity refers to a uniform and continuous rate of flow. On the other hand, the Euclidean space as an abstract space is “an immeasurable blank field, on which the mind could describe all the perfect figures of geometry, but which had no inherent space of its own” (Conford, 1976, 5, as cited by Madanipour, 2017, 30). Newton’s (as cited by Rynasiewicz, 2014) conceptualization of space was also based on the abstract interpretation of space

which is an absolute, true, and mathematical space remaining similar and immovable without relation to anything external and exists independently from the bodies. Leibniz (as cited by McDonough, 2019) challenged the idea of absolute space and regarded space as an order pertaining to coexistences while time as an order pertaining to the successions. Alternatively, Kant (as cited by Janiak, 2020) asserted that space is a sensible form of the observer's intuition. For him, space is merely a form of intuition not a property of things in themselves and they are the "subjective constitution of the mind" (Janiak, 2020).

Through the arrival of non-Euclidean theory and relative physics, the conceptualization of space and time gains a relational interpretation. Not only space and time have a relation with each other but also, they have a relation with the concept of the event.

According to the relational conception of time, Aristotle and others (including, especially, Leibniz) do not see time as an independent entity; they link time to the events that occur in time (Markosian, 2016). This conceptualization of time highlights the temporal relations among things and events.

Aristotle (1996, 108) defines an interaction between time and change by regarding the concept of time as a measure of change: "... time is a number of changes in respect of before and after; and because it is a number of something continuous, it is continuous itself." The now links the time, connects the past and the future by holding them together, and defines a limit of time by being the beginning of the one and the end of the other (Aristotle, 1996). Although the way the now divides and joins the past and the future in time is same, the every now is different from each other: "The division and the unification are the same, and they involve the same thing, but in terms of what they are, they are different" (Aristotle, 1996, 113).

Madanipour (2017, 18) asserts that time may be interpreted as "an overall pattern of fragmented and discontinuous events that unfold in a polyrhythmic manner". This means that, by referring to Lefebvre's (1992/2004) polyrhythmia, the diverse events may be regarded as the acting rhythms to form a unique combination of rhythms.

Although the fragmented and discontinuous events divide time, they define an overall pattern as a unification at the same time. The fragmented and discontinuous events interact with each other and create rhythmic patterns in daily life. All events showing a change from one situation to another may be regarded as the spatial-temporal fragments (Madanipour, 2017). This means that events are related to or have a character of time.

Einstein's general and special theories of relativity showed how space and time were relative to the state of motion of observer (Audi, 1995). This shows that space and time are not absolute and independent entities. The way the observer experiences space and time depends on the motion of the observer. In that sense, the connection between space and time is inevitable. As Madanipour (2017) mentions, the theory of relativity turns the concept of time into an observer-dependent phenomenon. It means that the temporariness is relative to observer; what is permanent to one observer may seem as temporary to another observer. This shows that the temporariness and permanence of an event are perceived with the appearance of other events that occur in time.

In everyday understanding, time usually refers to change and movement while space, relatively to time, seems to be more fixed and permanent with its physicality, spatial arrangement, and institutional connotations. As space evolves over time, its fixity and permanence need to be reviewed and re-adjusted recurrently. It is valuable to probe the spaces that are "flexible in its content" (Madanipour, 2017, 149) which refers to the possibility of gathering different people through different activities taking place for a short period of time. This character of the space creates the physical and social environments that can evolve within time and adjust to the changing spatial and temporal conditions.

All in all, the inevitable and continuous interaction between space and time results in the togetherness of space and time. This study discusses how the different forms of the togetherness of space and time define the proper spatial and temporal

conditions for the realization of temporary use. Following this, temporary use formulates new ways of interpretation and understanding both to space and time.



## **CHAPTER 2**

### **PUBLIC SPACES AND TEMPORARY USE**

The aim, in this part of the study, is to provide a comprehensive understanding of public spaces with a highlight to the significance of the presence of various people and possible diverse activities. The public spaces are reconsidered at the intersection of the two differing and interweaving attributes of public spaces: physical properties and activities. In addition, the concept of temporality is introduced as a fundamental characteristic in order to express the spatial and temporal pattern of human activity in space and time. Following this, the concept of temporary use is defined to clarify which use is to be named as a temporary use. The concurrence of the notions of temporary and use indicates not only 'an actual duration' but also 'an actual occupancy' derived from the idea of temporality that is converted to an urban understanding for the enhancement of public spaces in practice. Following this, the context of temporary use is discussed to position it in the current conditions of contemporary cities. Lastly, the definers of temporary use and different categorizations of temporary in literature are evaluated.

#### **2.1 Definition of Public and Public Space**

Public as a noun refers to “the general body of mankind, or of a nation, state, or community; the people” (“Public”, n.d.). And public as an adjective refers to “of or pertaining to the people; belonging to the people; relating to, or affecting, a nation, state, or community” (“Public”, n.d.). Although the definitions of the public as a noun and as an adjective are not identical, they describe an interrelated attribute. As a noun, it refers to people while as an adjective, it refers to the availability for people.

In *The Human Condition*, Arendt (1958), who is a well-known figure in the understanding of public and public space, refers to two expansions of the term public that are not identical but interrelated to each other. Firstly, everything that appears in public can be seen and heard by everybody. Only through publicity can reality, which is constituted by appearance, be known: “The presence of others who see what we see and hear what we hear assures us of the reality of the world and ourselves...” (Arendt, 1958, 50). Secondly, Arendt (1958) signifies ‘public’ as the common world which is related to human artifacts and the affairs between humans inhabiting this world. This common world revolves around the public realm which is explained with a metaphor of table to emphasize the relation between the public realm, people and social interactions: “To live together in the world means essentially that a world of things is between those who have it in common, as a table is located between those who sit around it; the world like every in-between relates and separates at the same time.” (Arendt, 1958, 52). A table, which symbolizes the public realm as the common world, collects people by sitting around it to relate them to each other and to separate them from each other. While the table provides a formal way of uniting, it also defines a distance between sitting people. In other words, the table itself creates communication and value sets for people to take a seat. Considering this, it may be concluded that the metaphor presents how the public accommodates public spaces.

Arendt (1958, 57) points out to the condition of being seen and heard by *many*, which signifies a large number of people, in the common world: “Only where things can be seen by many in a variety of aspects without changing their identity so that those who are gathered around them know they see sameness in utter diversity, can worldly reality truly and reliably appear.” The common world is a common meeting ground for *many* to gather. This enables them to be seen and heard by many other people. The presence of numerous different perspectives and aspects of people in the common world constitutes diversity not only in people but also in opinions because everybody hears and sees from a different position. The different positions and various perspectives provide the existence of the common world.

One of the most important social and political thinkers, Habermas (1991, 1) discusses the dynamic and complex relationship between the notions of public and private by calling the events and occasions public “when they are open to all in contrast to closed or exclusive affairs—as when we speak of public places or public houses”. Habermas (1991) declares that the notion of public is related to the notion of common whereas the notion of private is related to the notion of particular.

As a historical reading, Habermas (1991, 3) traced the concepts public and private back to their Greek origin with Roman additions where the public sphere was constituted with discussions and common actions: “The sphere of polis, which was common to all citizens, and the sphere of oikos, in which individuals are in their realm, were distinctly separated”.

Then, Habermas (1991, 7) analyzed the concepts through the feudal society of the Middle Ages where public and private were not distinguished:

... public sphere in the sense of a separate realm distinguished from the private sphere cannot be shown to have existed in the feudal society of the High Middle Ages [...] This publicness (or publicity) of representation was not constituted as a social realm, that is, as a public sphere; rather it was something like a status attribute.

In the Middle Ages, King at the top, who was defined as the only public thing, was followed by the nobility and common people (Habermas, 1991). This is not the distinction between public and private in the modern sense; it is like a display of status and power. Habermas (1991) describes this type of public as a representative form. The representative public space is not a real public space because the king acts in public space by representing the public. In the representative form, it is not possible to mention a public space where people could freely express and discuss their opinions.

Sennett (1974), in his seminal book *The Fall of Public Man*, focuses on the changing meaning and character of the public domain in relation to the transformation of

European cities (especially Paris and London) during the 18th century. As cities grow with a development in the networks of sociability, the places for strangers to meet also grows with different patterns of social interaction:

By the time the word “public” had taken on its modern meaning, therefore, it meant not only a region of social life located apart from the realm of family and close friends but also that this public realm of acquaintances and strangers included a relatively wide diversity of people” (Sennett, 1974, 17).

In this context, public means life out of the life of family and close friends; it means to live with different social groups. Thus, the gathering of social groups constitutes the togetherness of people as public and this defines the diversity of people in public.

Arendt (1958) and Sennett (1974) express the fundamental changes in the understanding of the public related to the economic revolutions through the decrease in diversity. Arendt (1958) describes the effect of mass society as *the end of common world* whereas Sennett (1974) describes it as *the fall of the public man*. Arendt (1958, x) explains: “The end of the common world has come when it is seen only under one aspect and is permitted to present itself in only one perspective”. The mass society suffers the diversity of various social groups and makes them one similar society where there are no *many and diverse* people. Besides, Sennett (1974, 20) points out that the mass production of clothes and the use of mass-production patterns of tailors cause the similar appearance of different people so the homogeneity of appearance and the homogeneity of society. This results in the loss of diverse and distinctive segments in public. In other words, this means the loss of diversity.

Sennett (1974, 261) explains the withdrawal from the public into family and limitation of sociability of people to private as a loss of social interaction:

The result was more and more an attempt to withdraw from contact with others, to be shielded by silence, even to attempt to stop feeling in order for the feelings not to show. The public thus was emptied of people who wanted to be expressive in it.

Sennett (1974: 17) uses the term cosmopolitan to describe “the perfect public man” who feels comfortable to move in diversity. The dictionary definition of cosmopolitan is “having no fixed residence; at home in any place; free from local attachments or prejudices; not provincial; liberal (“Cosmopolitan”, n.d.).

A cosmopolitan man having no fixed location may move to many other locations and may gain the ability to see and hear many different perspectives. This may result from the different encounters and contacts that the cosmopolitan man meets. These encounters may teach public man to understand and learn from *others*.

The cosmopolitan man’s potential of traveling and being displaced constitutes the state of meeting with *many* which may refer to many different people having various perspectives in Arendt’s (1958) definition of public. As a result, cosmopolitan man contributes to publicness through interacting with different people in his travels.

Sennett (1974, 295) asserts the value of diversity through encountering strangers: “... people grow only by process of encountering *unknown*”. Also, Gehl (1971/2011) mentions about diversity by valuing the contacts with *others* through the opportunities for meeting and daily activities offered by public spaces. Here, *unknown* and *others* may be related to Arendt’s *many*. All depict the potentiality of the expression of different perspectives and aspects in the common world. In this regard, *unknown*, *others* and *many* imply diversity.

Another term needed to be mentioned in this framework of the study is flâneur. The term meaning stroller or loafer has gained attraction with its use by nineteenth century French poet Baudelaire (1964, 36, as cited by Yıldırım, 2013) to describe “gentleman stroller of city streets”. Philosopher and critical theorist Benjamin (2006, 192, as cited by Yıldırım, 2013) describes the flâneur “as the essential figure of the modern urban spectator, an amateur detective and investigator of the city”. Following him, the flâneur has become a significant figure for scholars. The term has acquired an additional meaning in an architectural sense by referring to the

passers-by who experience and discover surroundings while walking or passing through.

By highlighting the issues of diversity and inclusivity, Madanipour (1996, 144-145) constitutes the definition and character of public spaces through its character to accommodate many and diverse people:

Public urban space is the space that is not controlled by private individuals or organizations, and hence is open to public. This space is characterized by the possibility of allowing different groups of people, regardless of their class, ethnicity, gender and age, to intermingle.

Jacobs (1961, 147) expresses that the basis of the diversity in cities is the people having many differences: “The diversity, of whatever kind, that is generated by cities rests on the fact that in cities so many people are so close together, and among them contain so many different tastes, skills, needs, supplies, and bees in their bonnets”. This diversity is constituted by the public through the patterns of human interaction as seen in time and overtime that gives public spaces their character.

Jacobs (1961, 229), quoting Raskin Eugene, asserts that genuine differences in the city architectural scene express “the interweaving of human patterns”. The city architectural scenes (Raskin Eugene, as cited by Jacobs, 1961, 229):

are full of people doing different things, with different reasons and different ends in view, and the architecture reflects and express this difference- which is one of content rather than form alone. Being human, human beings are what interest us most. In architecture as in literature and drama, it is the richness of human variation that gives vitality and color to the human setting...

## 2.2 Two Interweaving Attributes of Public Space

Architecture defines the physical properties of public spaces for different people regardless of their personal, societal, and cultural differences to use it. Public spaces can offer many architectural scenes to various people to act in it. This makes public space “the stage upon which the drama of communal life unfolds”, as in the definition of public space provided by Carr et al. (1992, 3). By referring to its resemblance to a theatre stage, public space provides a platform on which people may speak, a play may be performed, an exhibition may be presented, etc. Its physical properties defined by architecture enable public spaces to exhibit anything publicly and to display anything to the public. In other words, the physical properties may initiate and enhance the activities that are performed by different people in public spaces. In the same way, activities may define alternative public spaces or enhance the existing public spaces by injecting social interaction. This defines a one-way interaction from physical properties to activities, another one-way interaction from activity to physical properties, and two-way interaction between physical properties and activities.

Colquhoun (1989) defines urban spaces with its two meanings, social space, and built space. The first meaning, studied by social scientists such as sociologists and geographers, concentrates on social space which covers “the spatial implications of social institutions” (Colquhoun, 1989, 223). The second meaning, studied by architects, deals with the built space which covers “its morphology, the way it affects our perceptions, the way it is used and the meaning it can elicit” (Colquhoun, 1989, 223). This shows that the physical properties defined under the built space are analyzed considering the effect on perception, use, and meaning.

In the framework of this study, public space has taken two basic directions. These two directions may be regarded as the two differing and interweaving attributes for understanding public space in the urban context. Public space is constituted by both the physical properties that the architecture defines for people to use it and the activities that provide people to “share the world of things” (Arendt, 1958)

collectively. The combination of physical properties and activities create social interaction in the communal life of public spaces.

### **2.2.1 Physical Properties of Public Space**

Public spaces have many different functions, shapes, and dimensions in cities varying “from the dark narrow streets, which encourage the passer-by to go through them as quickly as possible, to the wide public squares that invite people to stop and look around” (Madanipour, 1999, 882). They all constitute the public spaces of the city with some key elements in the built environment. Carmona et al. (2008, 9-10) mention about these key elements as ‘the kit of parts’ that constitute public space: *buildings* (walls, entrances/exits, building lighting, colonnades, corners, monuments/landmarks, etc.), *infrastructure* (roads and cycle lanes, bus stops/shelters, street lighting, etc.), *landscape* (trees, lawns and verges, road surfaces, street furniture, steps, etc.), and *uses* (events, gatherings, street trading, external eating/drinking, playgrounds, etc.). The first three categories refer to the physical urban form which constitutes the limits of external public space and which creates the venues for human activity. This asserts the relationship between physical elements and uses to constitute public spaces. The organization of the physical elements provides a ground for different uses.

Carmona et al. (2008, 11) assert that the rate of change is different for the elements of the kit of parts and change in the elements which tend to change more quickly such as the elements of landscapes, uses in the environment, etc. affect the perception of people:

... the way the different elements are cared for, and the impact of those elements that change most frequently – the paving, street furniture, shopfronts, signage, soft landscaping, building uses, and public space activities – are likely to be decisive in determining users’ perception of quality.

This means that people perceive the changes and these elements have a short-term impact on the perception of people about public spaces.

The physical combination of the key elements shows how archetypal meanings of public spaces are formed. The intentional organization of the elements for the design of public spaces becomes an issue rather than the impromptu results. While studying several old European cities' spatial organizations, in his book *City Planning According to Artistic Principles*, Sitte (1889/2006) criticizes the designation of an empty space, which is formed as a result of an unbuilt building lot bordered by four streets, as a plaza. He explains that the enclosed quality of the space is essential to transform an open space to a plaza (or public square) by mentioning the medieval and Renaissance plazas. He comes to this point by mentioning the nature of the ancient forum which was closed off from the outside. Following this, according to him, the main requirement of a public square is its enclosed character with correct openings of streets into it and interrupted infinite perspective vista.

The presence of the features found in nature – the sky, forest, sea, sun, etc. – have a special role and effect in the design of public spaces. Le Corbusier (1934, as cited by Lang, 2005, 7) wrote the five basic elements of urban design as “the sun, sky, trees, steel, cement, in that order of importance”. The many instances of the use of features like water and vegetation in public spaces reflect the significance of these elements for people in daily life. Montgomery (1998) mentions that public green space and water areas provide recreation by providing formal and informal playgrounds and gardens, health by filtering noise, light, and air, and setting and understanding by framing development sites, providing views and landscape images. The involvement of green spaces and water to the design of public spaces have some desirable impacts on both physical and natural environment, and people. These elements have the power to detract people from daily life by refreshing and relaxing them.

The physical conditions related to the natural features not only affect the feelings of people but also the occurrence of activities. Gehl (1971/2011) asserts the direct influence of the weather and physical conditions of the environment on activities,

the presence of people, and contact. In other words, the activities are sensitive to the physical quality of the environment. For example, on sunny days, people go out and spend more time with many activities in the streets.

After studying the historical evolution of public spaces varying from Greek agora and Roman forum to the Renaissance Square, Carr et al. (1992) form some clear ideas about the wide variety of overlapping types of public spaces existing in today's cities. The types of contemporary urban public spaces are public parks, squares, and plazas, memorial, markets, streets, playgrounds, community open spaces, greenways and parkways, atrium/indoor marketplace, found/neighborhood space, and waterfronts. Although public spaces take many forms and have different names, they all share common characteristics. They contain the public amenities and physical elements that support activities. This creates the two attributes of public spaces related both to physical properties and activities.

In addition to their physical aspects about describing their structure, form, and varieties, physical properties define the way people use it and affect the way people perceive. That's why it is not possible to consider the physical properties of public spaces without their identity and meaning. According to Carmona et al. (2010, 97), based on Relph's (1976) idea of place where people construct meaning out of lived-experience, people can change spaces into places by giving them meaning. This shows how meaning is structured from the mutual relation between people and their environment.

Through theory of imageability by Lynch (1960) known for his work on the perceptual form of urban environments in his influential book *The Image of the City*, the quality of the city is discussed with the legibility of the different elements (defined as paths, edges, districts, nodes, and landmarks to enhance imageability) perceived by observers. In the urban context, these elements operate together, and they are patterned together for the legibility. With the association of the five elements -paths, edges, districts, nodes, and landmarks- defined by Lynch (1960a, 51), people gather the information together and create an image of the city: "... districts are

structured with nodes, defined by edges, penetrated by paths, and sprinkled with landmarks ... elements regularly overlap and pierced one another”. In this regard, the physical approach defines the concept of the mental map for people to construct a guide or route knowledge in urban space.

Canter (1977, as cited by Montgomery, 1998) expresses that an urban environment is a place consisting of form, activities and imagination. Montgomery (1998, 96) in his seminal article on urbanity, asserts that Canter (1977) “combines the urban design perspectives of those concerned with mental maps and imageability with those who consider the physical attributes of place, and with those who stress the essential importance of activity...”. On the other hand, Punter (1977, as cited by Montgomery, 1998) refers to three components as form, activity, and meaning to create a sense of place. Montgomery (1998), building on the ideas of Canter (1977) and Punter (1991), identifies the three elements of sense of place: physical form, activity, and image by emphasizing people.

The lively relation between physical properties and activities in the understanding of public spaces is indispensable because public spaces provide the venue to bring people together for various activities. They are expected to act as a ground or an infrastructure for public life in cities. At that point, it is valuable to probe why activities come to the fore in public spaces.

### **2.2.2 Activities in Public Space**

Public space is all about people. Public spaces are for people, of people, and by people. It becomes imperative that people are related exponents for the definition of dynamism and social interaction in public spaces. This enables public spaces to have their rhythm with the presence of people, their diverse activities, and movement. In literature, some notions are capturing this dynamism in the physical environment such as *action* that becomes an influential concept in the understanding of public and public space with Arendt’s (1958) approach, *activity* that becomes a precious concept

for vitality and diversity in urban space with the reconsideration of Montgomery (1998), *use* that is used as a more general conception in this content, and *event* that becomes a concept directing the design in architecture with the highlight by Tschumi (1996).

The dictionary definition of action is “a process or condition of acting or moving, as opposed to rest; the doing of something; exertion of power or force, as when one body acts on another; the effect of power exerted on one body by another; agency; activity; operation; as, the action of heat; a man of action” (“Action”, n.d.).

Arendt (1958, 7) asserts that “action, the only activity that goes on directly between men without the intermediary of things or matter, correspond to the human condition of plurality...”. In its common sense, the phrase of plurality refers to the presence of people having different perspectives. Arendt (1958, 7-8) defines plurality as a condition for action because “we are all the same, that is, human, in such a way that nobody is ever the same as anyone else who ever lived, lives, or will live”.

The dictionary definition of activity is “the state or quality of being active; nimbleness; agility; vigorous action or operation; energy; active force; as, an increasing variety of human activities” (“Activity”, n.d.).

Public spaces have the potential to enrich public life in cities by providing possible diverse activities. They are the spaces to take a breath, to relax, to promenade, to socialize, to engage many activities, to purchase food or different goods, or just spaces to gaze at surroundings. These diverse activities enable people to participate in everyday life surrounding them. The diversity of activities is embraced by a diversity of people having differences in public spaces. Considering the diversity in people and use, public spaces can accommodate different associations of people and activities. By asserting the value of the combination of physical space, sensory experience and activity in urban space, Montgomery (1998) mentions how places become to represent values and identities which are constructed through the association of people and activities, and how the individuals’ and wider cultural values, beliefs, and ideas partly affect the image of the place. Despite the difference

in perceptions and understandings, public spaces may construct a common identity and image for different people.

Montgomery (1998) introduces activity as a product of diversity and vitality. In addition to the value of diverse kinds of use and people, Jacobs (1961, 148) emphasizes the size of use for diversity and vitality: “The diversity of city enterprises includes all degrees of size, but great variety does mean a high proportion of small elements. A lively city scene is lively largely by virtue of its enormous collection of small elements”. In this way, considering both the diversity and vitality concerns, number and intensity of people, their movement, and flow, number and intensity of activities, their time and size of use are important for a successful urban space. Jacobs (1961, 234) expresses the valued role of residential streets involving all kinds of fine-grain commercial and working uses on vitality through the presence and participation of people: “The more intensely various and close-grained the diversity in an area, the more walking”.

The more people walk, the more opportunities for people to interact. The diverse many people using public spaces provide diversity in encounters and social interaction. Public spaces enable this not only by providing physical environments such as streets, squares, parks, etc. but also by providing a social environment to accommodate the various possibilities of encounters and interactions. In this regard, they offer opportunities for people to meet and interact through daily activities.

In its common sense, the notion of use seems to refer to the purpose and function of a space that may create and identify the architectural space through activities. The dictionary definition of the word use is “the act of employing anything, or of applying it to one's service; the state of being so employed or applied; application; employment; conversion to some purpose” (“Use”, n.d.). In this regard, it can be concluded that use connotes to both utility which defines the state of being useful and usufruct which defines the right of using the benefits of something (Kamleithner & Kohoutek, 2006).

Kamleithner and Kohoutek (2006, 26) explain the significance of the social relationships concerning property, possession, and right to use for the definition of use:

Use is, in any case, not a quality that is inscribed in things, but rather buildings or spaces of social relationships in the triangle of property, possession and right to use. In that sense, use is a more or less flexible relationship within which people can make various uses of one and the same thing or, expressed more generally, can relate to this thing in different ways — and thus pursue different interests.

This shows that the notion of use should not be merely considered by a functional manner that is attributed to buildings and spaces; it should be considered in a broader sense referring to a set of social relationships between people and use. The presence of numerous perspectives of people constitutes the various uses in public spaces. Everyone is seen and heard by different people having differences and as a result, they express their way of interaction to use in diverse ways. In this regard, use plays a role to identify the flexible relation between people and the built environment that people possess. People reflect their difference in the state of mind to their flexible relationship with the environment through their uses.

The dictionary definition of event is “that which comes, arrives, or happens; that which falls out; any incident, good or bad” (“Event”, n.d.).

Michael Foucault (as cited by Tschumi, 1996, 256) attributes more meaning to the event rather than assessing it as a single action or activity by describing it as “the moment of erosion, collapse, questioning or problematization of the very assumptions of the setting within which a drama may take place - occasioning the chance or possibility of another, different setting”. For Tschumi (1996), in consideration of Foucault’s approach, the event is a turning point, not an origin or an end. The turning point refers to “a time at which a decisive change in a situation occurs, especially one with beneficial results” (“Turning point”, n.d.). In that sense, the event inherently refers to the moment taking place of a significant change with a

result that may improve the situation by offering a possibility of a different space. This explains the inevitable and internal relationship between space and time supported by event.

Following the idea of event as a turning point, Madanipour (2017, 138) has a similar approach to event which has a potential to cause a change with some results like breakdown and formation of structures:

Short-term events may be considered an ingredient of the evolution and transformation of structures or an alternative to the permanent structures. In the former case, they may be seen as intervals in structural transformation, as the signs of structural breakdown and the formation of new structures.

This means that event offers a new origin while providing an end. It shows what might happen if things are changed. That's why it may be recalled as the turning point.

Tschumi (1996, 258) defines event:

The event is the place where the rethinking and reformulation of the different elements of architecture, many of which have resulted in or added to contemporary social inequities, may lead to their solution. By definition, it is the place of the combination of differences.

It may be asserted that event provides the questioning of the status quo of the problem and the creation of the possibility of different times and spaces through change. The event defines the solution of the problematization. In addition, by referring to the definition of event as "the emergence of disparate multiplicity" by Jacques Derrida (as cited by Tschumi, 1996: 257), it may be asserted that a combination of differences offers a disparate multiplicity.

Regardless of how the concepts of action, activity, use, and event are named, all mainly refer to what people perform and how people act. Their focus is on the presence of people and the impact of what they do in the space on the space. At that

point, it is valuable to express the contributions of these differently named concepts in public space.

Whyte (1980) asserts that strangers are more likely to socialize when there is an unusual event going on and describes this situation as triangulation in which an external stimulus, which may be a physical object or sight such as sculpture and musicians, creates a social link between people. This stimulates strangers to interact. In this context, the external stimulus may be regarded as an urban catalyst to enhance social interaction.

As Holland et al. (2007, ix) concluded, the interactions in public spaces may occur in a planned or unplanned way: “Public spaces allow people to meet on ostensibly neutral ground in planned and unplanned ways, to interact with others within the context of the whole community”. In other words, these interactions may be spontaneous as a part of everyday life or may be designed as a part of enhancement concern of public spaces. Also, spontaneous interactions may be turned into planned ones over time with the formation of high-intensity relationships.

Gehl (1971/2011) simplifies the concept of varying degrees of contact from ‘active contact’ that is a high-intensity contact form to ‘passive contact’ that is of low intensity, through a gradation of social interactions from close friendships to friends, from friends to acquaintances and chance contacts. He asserts that public life initially starts with low-intensity passive contact can be further developed to high-intensity close friendships through regular encounters and meeting in public spaces. Also, Gehl (1971/2011) mentions about the opportunities related to meeting, seeing and hearing others includes a contact at a modest level, a possible starting point for contact at other levels, a possibility for maintaining already established contacts, a source of information about the social world outside and a source of inspiration, an offer of stimulating experience. The more intensified contact occurs, the more intensified possibilities of further contacts and activities occur.

The activities and interactions enable people both to observe and to act actively in public spaces. People have a choice to be an observer or audience through seeing

and hearing and, they have a choice to participate and become an actor. Lennard and Lennard (1984, 21-22, as cited by Lofland, 1998/2017, 31) assert that people may choose to become actors in public spaces to express themselves:

A public space ... is at once both stage and theatre, for in public the spectators may at any moment choose to become actors themselves. [...] They make visible certain tragic, comic and tender aspects of relationships among friends, neighbors, relatives or lovers.

This enables people to claim and own public spaces temporarily by giving voice to people to express their opinions individually or collectively. People learn different perspectives of people and understand them in public space

In public spaces, there are different ways to express and manifest opinions. Although protests and strikes may be the most common signs of sharing opinions, public art, music, performances, etc. are the other ways to express opinions with a spontaneous or planned/designed manner. Different social groups have developed public spaces in their daily life to express their opinions and support their needs: celebrating, communicating, performing local rituals, marketing, talking about local news, demanding personal and political rights, etc. These different types of communal activities provide a communal life and cause other people to be a part of a whole. This creates a sense of community because of the democratic freedom of acting in public spaces. Carr et al. (1992, xi) make a strong connection between public space and community by defining public spaces as: "... the common ground where people carry out the functional and ritual activities that bind a community, whether in the normal routines of daily life or periodic festives".

Walmsley (1988: ix, as cited by Cheshmehzangi and Heat, 2012, 254) clarifies that the spatial organization of urban society establishes the patterns of human behavior related to the past (or memory), culture, knowledge, and emotions. The knowledge and experiences revealed from the urban environment have an impact on the way people live and behave. This means that human behavior so urban environment depends on many different variables such as lifestyles, rules, social arrangements,

shared values, norms, ideas, etc. This defines a two-way interaction between people and the environment.

### **2.2.3 The Interaction Between Physical Properties and Activities**

Both the activities and the physical properties of public spaces are significant for public spaces. The physicality, directly and indirectly, affects the quality and content of activities and social interaction. The design of public spaces can reveal the inherent opportunities of meeting, seeing, and hearing other people. These opportunities can initiate and support the different forms of activities so social interaction. This means that there is an interweaving interaction between physical properties and activities.

Gehl's (1971/2011, 14) famous term *Life Between Buildings* asserts the interaction between physical properties and activities: "Life between building comprises the entire spectrum of activities, which combine to make communal spaces in cities and residential areas meaningful and attractive". Gehl (1971/2011) introduces the three categories of outdoor activities in public spaces by relating the physical conditions of the environment to activities, the presence of people, and contact. The first type of activities Gehl (1971/2011) introduces is the necessary activities which are the compulsory activities occurring independently from the conditions of the exterior environment. People put into practice these activities under all the physical conditions of the environment. In other words, the environment has a slight influence on them. These activities encompass everyday tasks and pastimes such as going to school or work, shopping, waiting for buses, etc. and they require more or less participation. The second type of activities Gehl (1971/2011) identifies is the optional activities that occur depending on the willingness of people to participate. The occurrence of optional activities mainly relies on the exterior environment and is influenced by many different factors such as time, weather, and space. The activities encompass the activities occurring optionally such as going for a walk to take fresh air and standing around enjoying life. The third type of activities Gehl

(1971/2011) clarifies is the social activities whose occurrence depends on the presence and participation of others in public spaces. Like the optional activities, social activities are conditioned by the physical setting of the environment. It includes children playing together, conversations, communal activities, and passive engagement. Gehl (1971/2011) also calls them as resultant activities because they frequently evolve from the other two activity categories. Necessary and optional activities directly affect the development of social activities. Social activities occur spontaneously in public spaces with being and moving of people in the same space. For example, when someone walks for a necessary activity, they can meet, and social activity occurs.

In that sense, the poor quality of the environment only accommodates the strict necessary activities whereas the high quality of the environment welcomes more optional activities. As more optional activities occur, the possibility of social activities to occur becomes high. Considering this, Gehl (1971/2011, 11) depicts the direct relationship between the conditions of the environment and outdoor activities: “In a good environment, a completely different, broad spectrum of human activities is possible”.

The human needs in public space also refer to the interaction between physical properties and activities that people perform. Carr et al. (1992) identify the five fundamental human needs in public space: comfort in space referring to the physical, social and psychological aspects of required needs, relaxation referring to a sense of repose and active recreation as a pause from the routines and demands of city life, passive engagement with the environment through observing and watching the passing scene, active engagement with the environment through active involvement with activities, and discovery referring to the desire for stimulation and need for exploration. These are the reasons for the presence of people in public spaces.

From the five human needs in public spaces, comfort and relaxation may be regarded as attributes of physical properties of public spaces. Comfort as a basic need has a role to provide appropriate and satisfied conditions for people to use it through

activities. This enables public space to initiate activities. Without comfort, people may prefer not to spend time in public space, and this may decrease the possibility of the occurrence of optional and social activities. An example to provide comfort to people, public spaces include the physical comforts involved in relief from sun and glare in hot climates, access to the sun in cold climates, shelter from the rain, and comfortable seating. Also, relaxation may be reconsidered with the physical properties as places of relaxation which accommodate repose and active recreation.

On the other hand, passive and active engagement may be regarded as the attributes of activities in public spaces. Passive engagement represents the interaction with the environment without being actively involved whereas active engagement represents a direct interaction with the space itself and people in it. Besides the value of active engagement, passive engagement as ‘people watching’ or ‘observation’ has a significant value for public spaces. Considering this, Arendt’s (1958) expansion of the public as ‘being seen and heard by many’ may be regarded as one of the most common passive engagement in public spaces.

Discovery provides an opportunity to explore and observe the different activities and things that people are doing. It may be asserted that the act of discovering defines an activity by itself. To discover, people travel and go to new places to learn about the special qualities, to meet with different people, etc. as the cosmopolitan man does in Sennett’s *The Fall of Public Man* (1974). Car et al. (1992) points out that discovery interacts with the physical properties by means of the diversity in the physical design and the changing vistas. This means that changing physical qualities and changing human activities are valuable to provide a sense of discovery.

All in all, the attributes of physical properties and activities are interweaving with each other in public spaces. It is not possible to think about one from another separately. They define social life in public spaces together.

### 2.3 Temporality in Urban Context

Temporality is a fundamental characteristic of urban spaces. It is expressed through complex forms of rhythms as an attribute of everyday life by encompassing its relation to space, time, and nature in the urban context. People and nature being the rhythmic elements by themselves emerge out of their dynamic relationship in urban spaces and their relationship constitutes the forms of the urban rhythm. These rhythms are spontaneously experienced. People naturally use the concept of rhythm, and they believe in the ability of mastering and possessing the content and meaning of rhythm (Lefebvre, 1992/2004).

Lefebvre (1992/2004, 15), in his work *Rhythmanalysis: Space, Time and Everyday Life*, discusses the interrelation between time and space in the understanding of everyday life by analyzing rhythm as not an object but as an analytical tool: “rhythm is in every interaction between time, space and energy”. He explores the temporal dynamics and patterns of space with the rhythms in everyday life. Lefebvre (1992/2004) asserts that the rhythms (i.e. from trees, flowers, birds, etc.) form polyrhythmia, which is a unique combination of rhythms, with their surroundings. Thus, polyrhythmia is composed of diverse rhythms interacting with each other and forming the rhythmic fields. This shows how elements having their rhythm interact and become a part of the whole, the rhythmic field. Following this, it may be concluded that urban spaces are the polyrhythmical fields, composed of the rhythms of urban everydayness.

Concerning musical rhythms, Lefebvre (1992/2004) introduces the three indispensable attributes of rhythm which are repetition, measure, and movement:

- “No rhythm without repetition in time and in space, without reprises, without returns, in short without measure” (p. 6).
- “For there to be rhythm, there must be repetition in a movement, but not just any repetition” (p. 78).

Lefebvre's (1992/2004) approach to rhythm through repetition, measure, and movement explains how everyday rhythms manifest themselves through everyday life in urban spaces. Besides, Lefebvre (1992/2004, 6) describes the interrelation between repetition and differences that difference is hidden and inherent in repetition itself: "When it concerns the everyday, rites, ceremonies, fêtes, rules, and laws, there is always something new and unforeseen that introduces itself into the repetitive: difference". This relationship of repetition and difference has the potential to define diversity and vitality in everyday life in urban space. Then, urban space as a physical environment plays a significant role to accommodate repetition and difference.

Urban rhythms are from both everyday life and spatial rhythms. These rhythms can be recognized by human activity and everyday life in urban spaces. Lefebvre (1992/2004, 89) explains how rhythms imply to space and time relation:

... all rhythms imply the relation of a time to a space, a localized time, or, if one prefers, a temporalized space. Rhythm is always linked to such and such a place, to its place, be that the heart, the fluttering of the eyelids, the movement of a street or the tempo of a waltz. This does not prevent it from being a time, which is to say an aspect of a movement or of a becoming.

By referring to Arendt's understanding about 'sharing a world of things collectively', sharing a world of rhythms collectively in an urban context may enhance public spaces through defining temporalities that repeat and differentiate in everyday life. Considering this, rhythm in relation to temporality may be perceived as one of the key attributes to construct an enhanced public space because "rhythm [...] brings with it a differentiated time, a qualified duration" (Lefebvre, 1992/2004, 78).

In *What Time is This Place?* Kevin Lynch (1972, 241) argues that space and time "are the great framework within which we order our experiences. We live in time-places". This means that time and space appear and develop together. This interaction between time and place constitutes what and how people experience. In this regard, "space and time modify each other: the idea of a space is built up by a

temporal sequence of scenes; time is enriched by cramming it with spatial experience” (Lynch, 1972, 167).

As a result of the dynamic relationship between space, time, and people, temporality is perceived rhythmically as a passing of time in urban spaces; the days following by nights, the nights repeatedly following by days, the seasons following by one to another, etc. In other words, the passing of time is experienced through the interaction of time with urban space in everyday life. Lynch (1972) asserts that there are two ways to experience the passage of time in the built environment:

1. *Rhythmic repetition* which refers to “the heartbeat, breathing, sleeping and walking, the hunger, the cycles of sun and moon, the seasons, waves, tides, clocks” (p. 65).
2. *Progressive and irreversible change* which refers to “growth and decay, not recurrence but alteration” (p. 65).

Following on Lynch (1972), it may be asserted that the experience of passing time is sensed through the activities of people, and especially through seeing and hearing the built environment and maybe the other people. In this regard, the human activity becomes a way to express the interaction between time and space. Lynch (1972, 72) asserts the role of human activities in terms of both spatial and temporal aspects in physical design:

... physical design has been broadened to become spatial design, planning the form of behavior and things in space. But it is the deal with behavior, it must consider the temporal as well as spatial pattern, and it becomes an art of managing the changing form of objects and the standing patterns of human activity in space and time together.

Lynch (1972) mentions that the timing of action or physical intervention influences the good functioning and style of a place as the effect of the location of that activity or intervention. This constitutes the value of rethinking when activities are likely to happen on behalf of the spatial facilities.

Rapoport (2005) conceptualizes the environment as the organization of four variables: space, time, meaning, and communication. The activities are organized in time as well as in space. Their relation to time may be explained with their occurrence at different time cycles: day/night, weekday/weekend, lifetime, seasonal, annual, etc. This involves the unavoidable temporal component to the conceptualization of the environment.

Furthermore, Rapoport (2005, 39) asserts the importance of the role of culture on the relationship between people and environment to understand particular specific user groups, situations, and environment: “Many of the mechanisms linking people and environments are cultural, are related to culture, or vary with culture”. The cultural characteristics of human beings affect the characteristics of the built environment. On the other hand, similar environments can have very different effects on people in their culture. In consideration to the role of culture on the environment, he mentions about the effects of rapid or sudden changes in the environment such as the dissatisfaction of women with the elimination of the visits to the village for water as a social and information exchange occasion with the provision of taps to dwellings in North Africa. Rapoport (2005: 5) proposes slower changes to the environment in case of major and unforeseen consequences in social occasions: “What generally works much better is slower change, allowing for what we might call creative adaptation -the rejection of some innovations, the adoption of others, and their integration into the cultural system”. Concerning the temporal component involved by Rapoport (2005), temporal organization of activity in same or different space may be considered to adapt the environment slowly and creatively for improvements. This is an adaptation that occurs in reference to the changes in physical properties.

Lang (2005) explains the elements of the physical public realm by considering it as a set of behavior settings which consists of standing (or recurring) behavior pattern, a milieu (pattern of the built form), and a time. In this behavior setting, milieu consists of the floor of the ground, the surfaces of the buildings, physical elements, objects and has a role to provide the affordances for the occurrence of behaviors which is mainly related to the involved people’s predispositions, motivations,

knowledge, and competencies (Lang, 2005). Also, the standing (or recurring) behavior pattern addresses the activities and the people engaging in them.

Lang (2005, 8) introduces people through their pattern of behavior and the frequency of these behavior patterns - as introducing a sense of time experience - in milieu to the understanding of the nature of public realm: "Some of the patterns may be occurring frequently on a daily basis or even throughout the day or year, while others may occur only on special occasions (e.g. the celebration of national days)". This shows that activities are involved as the temporal components of the organization of the urban space. The organization of time results in the temporal organization of urban space.

Through the behavior patterns occurring at different times, people share time. They have a similar relation with time by having the same work and live time, same ritual time, same celebration time, etc. This is related to the shared schedules and routines of people in everyday life. As a result, what brings people is not only the spaces but also the time. It may be concluded that the sense of time creates a sense of place. Jackson (1974, 9) associates the sense of place not to the physicality of the space (its architecture or a monument in a designed space) but to the time, to some daily, weekly or seasonal events: "It was the public event which gave dignity to place: it was not the composition of open spaces and surrounding structures that made the marketplace beautiful, it was the moment, the day."

Wunderlich (2013) expresses that the sense of time as an aesthetic experience is subjective and place-specific, and it varies according to the state of people's mind and affective engagement with the social setting, also with the urban design. Flaherty (1990, as cited by Wunderlich, 2013, 385) asserts that "the sense of time is influenced by the degree of subjective (or emotional) involvement with a social event and the complexity of the event". This shows that it is an experience of how people perceive and engage with the urban space. In this regard, the sense of time differs from place to place and from culture to culture.

Wunderlich (2013, 383) mentions about the two facets of time as a sense and as a process in everyday urban space: “Focusing on place-temporality as a sense, it discusses its sensuality, performance, and aesthetic significance; and focusing on place-temporality as a process, it reflects on aspects of its expression and representation in urban space”.

All in all, the place-temporality understanding of urban space has a potentiality to think for the enhancement of public spaces by expressing it both spatially and temporally. In addition to the conventional perspective on urban space with its physical and social meaning, the temporal meaning of the space enables people to perceive and engage with their perspectives and shared values.

The temporal meaning defines a relationship between people and physical space to create an experience that belongs to that moment. The temporal organization provides a close grouping of urban rhythms at different times and in different urban spaces. As a result, not only the urban space but also the time bring people together. In other words, the temporal fine grain of activities as a possibility for temporary use may involve the temporal organization and celebration of urban space providing a sense of time as well as a sense of place.

## **2.4 The Contextual Properties of Public Space**

The contextual properties of public spaces are constituted by different components that are interweaving to each other. Montgomery (1998) constitutes a conceptual framework for an urban sense of place by combining different determinants of place that are defined as form, activity, and image. Following these determinants to foster an urban sense of place, the contextual properties of public space are mainly described as location, form qualities, and existing use patterns in this framework of the study. Image as a component is not included in this study because it is a comprehensive subject that needs to be examined separately.

Location as one of the significant components for the contextual properties indicates the position of the public space in the city. In that sense, public spaces may be at the center, or in the periphery. People may easily access to urban central areas while access to areas in the periphery may be difficult for them. This shows that accessibility becomes an issue related to the contextual property of location. For example, a park located at the center of the city may become a public space where people constantly visit and spend time in their everyday life. In that sense, the location directly affects the number of people in and around the public space at different times of day and night. However, this does not mean that urban central areas are always active in use. They may become vacant and abandoned.

The form qualities of public spaces are another substantial component to describe the contextual properties. In the highlight of the interaction between form, activity, and image, the proper physical conditions are investigated by Montgomery (1998). By the analysis of the relationship between these conditions and the theoretical framework of this study, the condition of mixed-use, fine grain, adaptability, human scale, green space, and water space and landmarks, visual stimulations, and attention to detail may be considered as the valuable components for the form qualities. They may initiate or prevent the daily use of public space by people in their everyday life. For instance, people may not prefer passing through and using a narrow, dark, and linear street at nighttime, or waiting in a large square made up of a concrete surface with no greenery area in the daytime. In these examples, scale becomes a crucial quality of form constituting both the preferences of users about public spaces and the intensity of activities. Moreover, the scale also affects the movement patterns of users. Streets connecting one destination to another are public spaces where people pass through whereas squares are public spaces where people stay and use.

The existing use patterns are also a significant issue for the context of public spaces. It may vary depending on the hours of the day, and night, and the days of the week. It mainly depends on the presence of users and their activities in public spaces. For example, an urban central area surrounded by workplaces (i.e. squares) may get busy at noon and after work hours, and lunchtime. However, an urban area for recreation

and relaxation in the periphery (i.e. waterfronts) may get busy at weekends and holidays when people have time. This shows that the urban context plays a crucial role in the existing use patterns because it affects movement patterns of users. Concerning the low intensity of use, spaces may become vacant, or abandoned.

All in all, different determinants become interweaving determinants to constitute the contextual properties of public space. However, different societies may have different approaches to different contextual properties of public space. Thus, it may be more accurate and beneficial to get reflections and results from observations.

## **2.5 Definition of Temporary Use**

Temporary as an adjective connotes to the meaning of “lasting for a time only; existing or continuing for a limited time; not permanent” (“Temporary”, n.d.). In the concept of temporary use, temporary as an adjective refers to the temporariness of the use by describing its short duration or time limit. The duration of temporary use, which may be regarded as the defined length of the time for the use to occur, may vary in a range from hours to months and to years. Thus, defining a use as temporary by evaluating its duration is somehow difficult -a space or use that lasts few hours, few months or few years may be considered as temporary. By following the concept of time as an observer-dependent phenomenon that is mentioned in the theoretical framework for space and time relation, the temporariness and permanence of the occurrence of the uses may be perceived in relation to the other uses that occur in time.

Bishop and Williams (2012, 5) assert that “... use is not temporary until it has proven to be so, by disappearing”. The diversified number of temporary uses appear and disappear every day in urban spaces. In that sense, they are only not differentiated from lasting uses with their limited duration but also with their cyclical character of appearance and disappearance providing to explore the possibilities of new temporary uses. Haydn and Temel (2006, 17) express the role of temporality in this

differentiation with its potential to search for new possibilities: “Temporary uses are those that seek to derive unique qualities from the idea of temporality. That is why they differ from lasting uses, not because they have fewer resources available or because they want to prepare their location for something other that will last longer”. Considering this, temporary uses leave the space for the possible further temporary uses that can take place in the same space. That’s why their character of cyclically appearing and disappearing makes temporary uses different from the lasting uses.

Ephemeral and provisional are two of the terms allied with the notion of temporary. Ephemeral is defined as “beginning and ending in a day; existing only, or no longer than, a day; diurnal” (“Ephemeral”, n.d.). Thus, the ephemerality depends on an existence and provides an existential temporality. On the other hand, the definition of provisional is “suitable or acceptable in the existing situation but subject to change or nullification” (“Provisional”, n.d.). This means that something is provided by a temporary need and it acts as a substitute having a potential of change and continuity with the risk of cancelation. Temel (2006) situates ‘temporary’ between ephemeral and provisional: temporary is short-lived like ephemeral and it can extend its life like provisional.

In addition to being short-lived, temporary uses may be the uses that repeat or appear only once. By following the cyclical structure of time, the temporary uses may be created by the cyclical beats such as recurring uses, rituals and celebrations that appear regularly and continuously. Also, in relation to the linear structure of time, they may be created by the transient beats that appear only once to provide progress or decline in the rhythms of the sequential time.

Through the idea of temporality, temporary use offers the alternate uses outside the normal cycles and rhythms of daily life. In this regard, temporary use of space may be regarded as an alternative way to constitute *the now*. It divides and designs *the now* by differentiating it from the other predictable and planned routines of life.

Temporary use may be conceptualized as “a manifestation of the emergence of dynamic, flexible and adaptive urbanism where the city is becoming more responsive

to new needs, demands and preferences of its users". (Bishop and Williams, 2012, 4) It may be asserted that temporary use is an outcome of the awareness on the permanence of transience and the highlight of the role of users on the reflection of this transience to architecture. This introduces an alternate urban understanding which enables citizens to think about the concept of change in public life. The users start to understand the character of the city they live in, and they become acquainted with the dynamism coming from the temporality hidden in their everyday life.

Bishop and Williams (2012) define temporary use as an intentional phase; in other words, temporary use is not dependent on its nature of use, economic concerns, formality and informality, scale, and duration but dependent on the intention of the user, developer, and planner by underlining the use as temporary. This shows that the different actors participating to the design process of temporary uses play a significant role in the realization of temporary use. The intention of the actors has an impact on the exploration of the contribution of temporary uses.

The prominent research of Urban Catalyst project during 2001-2003 explored the strategies for the temporary uses in vacant areas and integrated the potentials of temporary into a long-lasting urban development (Oswalt et al., 2011). Oswalt et al. (2011) define temporary use as the uses that are not considered as the normal cycles of urban development. According to the key findings from the examples, the time gap and the problems of gentrification and social exclusion revealed by the real estate market provide an opportunity for vacant spaces being laboratories for temporary uses (Oswalt et al., 2011). It is revealed that temporary use acts as a catalyst in urban development process and urban residual areas are niches for it (Oswalt et al., 2011). Temporary use as a catalyst causes the initiation or definition of uses in these areas. As a result of this, these areas become a breeding ground for new forms of art, music, leisure, start-up activities, nightlife, trading etc. This research having a different focus on the concept of temporary use directs the literature towards 'the power of temporary use' especially on vacant areas and abandoned buildings by proposing an active re-use to its users (Haydn and Temel, 2006 and Oswalt et al., 2013).

In the framework of temporary use, interim is also a term preferred for the application in vacant areas. Its dictionary definition is “the meantime; time intervening, interval between events” (“Interim”, n.d.). The interim use proposes a use taking place during a defined time interval. Different from the approach of Oswalt et al. (2011) on the contribution of temporary use as a long-lasting urban development, interim use does not offer a long-term approach. As Madanipour (2017, 51) asserts, interim use becomes “a mechanism for coping with crisis” by offering short temporal solutions and it provides solutions until the crisis is over. The interim use fills the spatial, temporal and spatial gaps created because of the global economic crisis in which there is a mismatch between supply and demand, the activities were discontinued, the spaces become empty or abandoned (Madanipour, 2017). It provides the possibility of temporary access to these empty spaces which are either indoor or outdoor spaces. In addition, the interim use is embedded in the economic production in which the human activities become a value of commodity, productivity and producibility in the marketplace. For example, with the increase in the number of town center shop vacancies in United Kingdom after the economic crisis in 2007-8, the movement for finding interim use in empty shops as an alternative use was emerged (Madanipour, 2017). As a character of interim use, this approach to empty shops also provided a short-term solution to cope with a current problem.

Following the economic connotations with interim uses as in empty shops, pop-up retails (or pop-up shops) are other examples for temporary uses carrying a commodity value. They are temporarily opened as the short-term sales spaces to sell any kind of merchandise, generally occurred under a title of an event or special celebration. In addition to this, they become an instrument for firms to constitute a fashionable image. The firms join in a trend with pop-up shops to stimulate a reputation in the marketplace and attract their clients (Madanipour, 2017). This shows that the interim use is dependent to and limited by outside, not only to its short duration but also to its economic definers.

In addition to these recent discussions on the concept of temporary use, it is basically known with its application in emergency contexts of the natural disasters and wars.

This form of temporary use carries a residential purpose and provide temporal accommodations for sufferers. A camp as a temporary city is generally created with tents and containers which are easy to construct and deconstruct to cope with the crisis of housing and poverty. The suffers can live in these temporary cities until the life returns to its normal cycle. Furthermore, squatting as a form of temporary use also refers to the temporal occupation of an abandoned or a vacant land for residential purposes. The users facing with housing problem solve their problem by squatting. It is regarded as a short-term solution until the users' problem of housing is solved. In that sense, squatting as a form of temporary use may be considered as a mechanism for coping with crisis of housing problem. The users are challenging the legal framework of property owner because they have no legal permission to use the land. They do not own or rent for the occupied area. The duration of this informal and illegal form of temporary use depends on the determination of the authority.

Finally, in recent years, the realization of temporary uses has been used to formulate new ways of interpreting and vitalizing whether a public space or a vacant area. Within the latter context, the aim of this study is to investigate the contribution of temporary uses on public spaces.

## **2.6 Key Terms Evoking The Concept of Temporary Use**

The researches on public space and public life seek for new possibilities to express alternative social and spatial relations to increase diversity and social interaction in public spaces. In this regard, the focus is directed to create alternative public spaces with concept of temporality initiating use by individuals, community or organizations to enhance public space. This results in a shift from formal public spaces to alternative urban spaces, expressions and relations because of the awareness of a dynamic public life which is more sensitive to the needs and preferences of users.

The literature on the concept of temporary use is disjointed and there is no consensus on the theoretical definition of temporary use (Table 3.1). The continuous researches on this area introduce several concepts referring to temporariness and the changed character of the urban space. These include temporary use (Haydn and Temel, 2006; Bishop and Williams, 2012; Colomb, 2012; Madanipour, 2017), everyday urbanism (Chase et al. 1999; Kelbaugh, 2007), loose space (Franck and Stevens, 2006), found space (Rivlin and Windsor, 1986), spaces of uncertainty (Cupers and Miessen, 2002), insurgent public spaces (Hou, 2010), the spontaneous city (Urhahn Urban Design, 2011), tactical urbanism (Lydon & Garcia, 2015), do-it-yourself (Iveson, 2013), and indeterminate spaces (Groth and Corijin, 2015).

Bishop and Williams (2012), mostly focusing on temporary use on vacant areas, mention about the urban spaces which have a potential to accommodate less formal everyday uses. These urban spaces become promising and integral element for the enhancement of urban public spaces to improve urban experiences and social interactions in everyday life.

These alternative searches for public space and public life propose an exploration of further possibilities for diversity and vitality. For understanding the status quo of the changing character of everyday public spaces, thinking about diverse and alternative uses in public spaces and creating vitality.

Everyday Urbanism, in its common sense, investigates the value of informal everyday uses such as casual meetings, garage sells, skateboarding etc. in everyday urban spaces. Chase et al. (1999, 6) asserts that everyday space is in contrast to the spaces that are carefully planned and designated, and it is “the connective tissue that binds daily lives together”. It may be considered that Everyday Urbanism explores the interventions which diversifies the interpretation of the present situation through small-scaled, temporary and not-intended uses or modifications. Considering this, the everyday urbanism understanding focuses on thinking about everyday urban space from a different perspective for diverse uses.

Franck and Stevens (2006, 30) provide a similar approach about alternative uses of public spaces by focusing on the looseness of the space that “arises from the unfolding of social encounters in public, whether they are forms of commerce, expression, adventure, escape or innovation”. The space becomes loose space which is “apart from the aesthetically and behaviorally controlled and homogeneous theme environment of leisure and consumption where nothing unpredictable must occur” (Franck and Stevens, 2006, 3). In this respect, loose space, where the optional urban activities involve and perform, enriches its existence with the discovery of possibility, diversity and spontaneity. This enhances public life through diverse alternative uses of public spaces by city-dwellers.

DIY urbanism (Iveson, 2013), Tactical Urbanism (Lydon & Garcia, 2015), Everyday Urbanism (Chase et al., 1999; Kelbaugh, 2007) and The Spontaneous City (Urhahn Urban Design, 2011) question who are regarded as alternate actors and how these actors can change and occupy the urban space with activities. These concepts introduce a way to make the practice and action open to all. That’s way, participation becomes an issue for these concepts. Although they are usually initiated by with smaller citizen efforts, they may be initiated by a collaboration of many different actors such as municipal departments, government, developers, and non-profit organization. In relation to their initiators, the uses become formal or informal temporary uses.

Specifically, Spaces of Uncertainty (Cupers and Miessen, 2002) and Indeterminate Spaces (Groth and Corijin, 2015) refer to the uncertain and indeterminate character of spaces; they do not have a fixed identity. These spaces are open to diverse and changing opportunities for personal or collective temporary uses. They become spaces for new expression and offer new uses for inhabitants, visitors, citizens, minorities etc. In that sense, both offer an alternative understanding for development through the involvement of different actors and various temporary activities. For these concepts, the non-determined use and character of space are regarded as the breeding factors for temporary uses.

Hou (2010) analyses the alternative social and spatial relationships in temporary spaces, informal gathering spaces as insurgent public spaces created by individuals and groups with examples such as community gardening in Seattle and Los Angeles, street dancing in Beijing, transformation of parking spaces into temporary parks in San Francisco etc.

What all these key concepts share is their emphasis on the potential of the activities performed by many and diverse people. Despite these varying concepts about temporariness, they assert the value of the activity, the spaces that are appropriated with temporary uses, the short-term duration of these uses, and users of places. By valuing the temporary activities, they mainly question the role actors who can change and occupy the urban spaces through temporary uses. Their attempt with alternate actors is to search for new possibilities and opportunities by questioning the status quo of the space and changing it with temporary activities. Although the idea of found spaces, different from other concepts, do not intentionally refer to such an attempt, the unintended uses on alternate spaces for public life inherently provide various possibilities and opportunities. In the common attempt of these concepts, people become the participants of it to change their streets, neighborhood, and cities. They define a venue for demonstration to enhance public space and social life.

Table 2.1 Key Concepts Evoking an Understanding of Temporary Use

Terms with Authors	Definition
Temporary Use (Haydn and Temel, 2006; Bishop and Williams, 2007; Colomb, 2012; Madanipour, 2017)	Temporary use can be described as the uses that “seek to derive unique qualities from the idea of temporality”. The term refers to the spaces used temporarily with a variety of activities.
Everyday Urbanism (Chase et al., 1999; Kelbaough, 2007)	Everyday urbanism encompasses activities such as informal commerce and festivities on sidewalks and in parking lots, the street life and art of ethnic neighborhoods, etc.

Table 2.1 (continued)

<p>Loose Space (Franck and Stevens, 2007)</p>	<p>Through people's activities that are not intended for those locations, spaces become loose. People recognize the hidden potential of urban space and express this potential with their activities. These activities can be impromptu or planned, and they may occur along with the primary uses on sidewalks, streets, parks, etc. They are mainly temporary; they may take place only once or according to a regular schedule.</p>
<p>Found Space (Rivlin and Windsor, 1986; Rivlin, 2007)</p>	<p>Found spaces are found and discovered by people with one or more activities on places that are not designed with its main function. These spaces contrast with the planned and formal nature of public spaces and they offer alternative places for public life.</p>
<p>Spaces of Uncertainty (Cuppers and Miessen, 2002)</p>	<p>In order to broaden the understanding of residual spaces, they introduce the term margin which are not officially or definitively occupied spaces. They refer to the margin as a highly open-minded space redefined through temporary uses. The margins - as the spaces of uncertainty- offer diverse and changing meanings to public life by acting as possible public space.</p>
<p>Insurgent Public Space (Hou, 2010)</p>	<p>The public space is approached in a state of emergence as a site for potentials and encounters. In this regard, insurgent public spaces are the spaces of civic contestation and informal activity. This understanding also comprises the acts of appropriating, reclaiming, pluralizing, transgressing, uncovering, and contesting.</p>
<p>The Spontaneous City (Urhahn Urban Design, 2011)</p>	<p>The understanding of The Spontaneous City enables individuals, and groups to reuse and reorganize spaces such as apartment blocks, parks, and streets, grounds of wind farms and companies. It is open, flexible, and dynamic. The four principles are zooming in, supervising open development, creating collective values, and being user oriented. It defines collaboration between professionals and initiators for mediating individual choice and common interest.</p>

Table 2.1 (continued).

<p>Tactical Urbanism (Lydon &amp; Garcia, 2015)</p>	<p>Tactical urbanism refers to low-cost, small-scale, and short-term interventions that enhance local neighborhoods. It demonstrates the possibility of change through the citizens' right to the city. Its urban understanding is the short-term action for long-term change. It enables the public to engage in the project planning, delivery, and development process. For developers, it offers the phase 0 implementation to test projects before a long-term investment.</p>
<p>Do-It-Yourself (DIY) (Iveson,2013)</p>	<p>Do-It-Yourself (DIY) may be regarded as a micro-spatial practice to rethink urban spaces. It deals with the informal actors who may cause change to diversify the present situation. It includes guerrilla gardening, traffic marking, housing &amp; retail cooperatives, subcultural practices such as graffiti/street art.</p>
<p>Indeterminate Spaces (Groth and Corijin, 2015)</p>	<p>The indeterminate spaces as the spaces left-out of time and places which have the potential for temporary appropriation and animation by informal actors. The spontaneous interventions of informal actors provide a different notion of urbanity considering the planned developments.</p>

## 2.7 Context of Temporary Use

The changing relationship between technology, economy and society transforms the perception of time and space in contemporary cities. The innovations in technology and economic result in a change in economic and social connotations in society. These are the intensified mobility, easier communication, the creation of spaces of flows and timeless time (Castells, 1996/2010), etc. In this regard, “cities of all kinds are connected, to varying degrees, through global networks, generating a new global sense of time, shaping and accelerating the rhythms of life in the city”. (Madanipour, 2017, 40) As a result, a sense of transience and common time emerge into the daily life of cities.

Madanipour (2017, 39) addresses the influence of these technological and economic changes on the creation of an urban temporality: "... the process of reification, quantification and commodification have paved the way for an instrumental treatment of temporality, turning it increasingly into the subject of market pressures of speed, productivity and profit maximization." For instance, the attraction of clients through the interim use of empty shops or pop-up shops for a brand image and the attraction of many outsiders through big city events (i.e. design biennales and sport competitions) may be regarded as the temporary use serving for economic connotations. However, temporary use cannot be only regarded as the application of ideas and practices fitting into the commodification process. The concept of temporary use generates the idea of an alternate urban understanding and intention to define a relationship between urban space and human activities-based primary on duration and occupancy. This idea in temporary use have a potential to be converted into an enhancement process for urban spaces, i.e. contributing to the urban development (Oswalt et al., 2011; Lehtovuori and Ruoppila, 2017), providing innovation and experimentation (Madanipour, 2017; Bishop and Williams, 2012), creating a mechanism for coping with crisis (Madanipour, 2017). This emphasis on the temporary use provides the transition from mechanical to social understanding of time.

## **2.8 Definers of Temporary Use**

### **2.8.1 Time**

Time as a definer indicates how long and how often the temporary use takes place. Although temporary uses are the uses having a short-term duration, their occurrence as a rhythmic repetition in everyday life may vary for each case. They can take place only once for a period, they can regularly take place and repeat at the same location, or they can take place and repeat at a different location later. Lehtovuori and Ruopilla (2012) call transient for the activities taking place only once, recurrent for the

activities repeating and migrant for the activities taking place by moving from one location to other. In addition, some temporary uses may become permanent after the defined period of use because of their symbolic meaning and role of attracting people like The Eiffel Tower in Paris. Lehtovuori and Ruoppila (2017, 59) explain that temporary uses may transform into permanent uses because they become to be “perceived as an essential element of the new character of place because of the difference it makes”.

### **2.8.2 Space**

Space as a definer creates its relationship with temporary use over its spatial conditions characterized especially by its current use condition. The space appropriate for temporary use may be open or enclosed, may be in the center of the city or at the periphery of the city, may be active in use or may be underused, and may be publicly owned or privately owned. These varying conditions of the spaces may be matched with each other in relation to the objectives of the project.

Lehtovuori and Ruoppila (2012) define the three types of spatial conditions, which are urban central areas, currently unused or under-used areas and areas losing significance, with their use and function, the attention and flux of people, the apprehension and meaning, the development perspectives, and the goals of temporary uses. In central urban areas, under-used areas and areas losing significance, temporary use respectively provides intensification, initiation and redefinition of the project area.

The literature review on temporary use indicates that temporary uses can take place in any place of cities but more often in vacant areas and public spaces. In relation to the framework of the study searching for the contribution of temporary use to the publicness of urban space, it is valuable to detect the spatial conditions cultivating the realization of temporary uses. Vacant areas and public spaces are the urban spaces that are defined whether with the absence or presence of activities and people.

What these two types of urban spaces share is their openness for further possibilities and opportunities of temporary activities performed by many and diverse people.

### **2.8.3 Type of Occurrence**

Temporary use comprises a wide range of activities becoming the effective definers to decide how they are formed by different actors. In other words, activities define the formative character of temporary uses. They can be grouped into two by considering how these temporary uses emerge by whom (i.e. by individuals, by local neighbors, by public authorities or by private organizations): spontaneous activities and designed activities.

Spontaneous activities are the activities that are performed by the users in found spaces (Rivlin and Windsor, 1986) such as in streets, on the steps, in front of the buildings, in the alleys, etc. They include the activities of everyday life such as meeting, eating, talking, watching, reading, playing games, etc. People perform these activities spontaneously and unintendedly for their desires and needs in their daily life. For instance, people spontaneously use the steps to the New York Public Library that becomes a found space and create an alternative public life. Besides, the memorials spontaneously created by public near the sites of sudden and tragic events may be another example for spontaneous uses. People express their spiritual feelings by leaving offerings such as flowers, candles or ribbons etc. in outdoor public spaces. Franck and Paxson (2006) assert that this interventional activity transforms public spaces into the sites of mourning and free expression with a high level of physical and emotional participation. These are the informal activities which are not legally assigned activities for these spaces. However, they may turn into formal activities with the approval by public authorities or private connotations.

Designed activities are the activities that are mainly oriented towards cultural and creative activities because in recent years, as Bishop and Williams (2012, 163) assert, “culture and creativity have been recognized as essential components of vibrant,

competitive post-industrial city”. Additionally, commercial creative activities are also common for designed activities. These culture creative and commercial creative activities include playgrounds, community gardens, temporary parks, art installations, reuse of vacant areas and industrial buildings for workshop and performance, urban beaches in city centers, street vendors, open-air/night markets etc.

Following this, it may be asserted that the examples for temporary uses correspond to the different types of public spaces defined by Carr et al. (1992) (public parks, squares, and plazas, memorials, markets, streets, playgrounds, community open spaces, greenways, and parkways, atrium/indoor marketplace, found/neighborhood spaces, and waterfronts), as explained in the section Physical Properties of Public Space of the study. Generally, whether temporary uses are implemented in public spaces or are turned spaces to public spaces.

Both spontaneous and designed activities bring diversity and social interaction to their specific location for its users. Although the spontaneous activities are not directly included to the framework of this study, they have an interweaving interaction. The designed activities have a potential to initiate spontaneous activities. These two different types of activities overlap in the project area, and the spontaneous activities appear within the designed activities. In this regard, the designed activities may be recalled as the designed activities initiating spontaneous activities.

#### **2.8.4 Actors**

Various actors involve to temporary use that occurs either in a spontaneous or a designed manner. They can participate in different stages for many different reasons. The diversity in temporary uses and the eclectic structure of their occurrence reflect as a diversity in users.

Blumner (2006, 6) describes the potential actor(s) as “an individual or a group of people, who wishes to develop a project” such as artists, entrepreneurs, community

organizations or other volunteer groups. What these actors share is their desire to initiate, participate and become a part of the temporary use.

In addition to the actors willing to initiate temporary use, the property owner of the space involves to the realization process of temporary use. The property owners may be private individuals, public agencies, municipalities or corporations willing to develop a project. For the legal basis of the temporary use, the property owner should be informed, and the consent of the owner should be taken. The property owner is involved in the process of taking the permits and permissions of short-term and location-specific uses from institutions. Furthermore, property owners take several advantages from the use of their sites (i.e. an economic income by the rents). In addition to its economic gains, especially for vacant areas, the temporary use of the site provides a management and maintenance of it.

The local governments participate to the process to provide a legal basis for temporary uses. They can provide the space for temporary use and the permits that are needed for the process. In addition, as Blumner (2016) mentions, the temporary use provides the involvement of the different agencies such as planning department, building and environmental departments, youth, park and recreation agencies to the process of temporary use due to their potential common missions.

Groth and Corjin (2005) state that the main actors deciding the legal status of the temporary use are local authorities and proprietors, and there is a potential for the neighborhood and sympathizers as informal actors to be involved in the decision-making process. The informal actors can take the advantage of being familiar with the site where they observe during their daily life and recognize the possible potentials of it. For example, as studied by Oswald et al. (2011), in Berlin, RAW Temple, which was an abandoned industrially built area of sheds, workshop buildings, administration buildings, a bank, doctors' surgery, a vocational school and several residential units, initially reoccupied by pioneers who persuade the site owner about the potentials of the pioneer activities on the site. The informal actors recognize the potential and they want to provide space for the establishment of

cultural and social projects. Then, the owner agrees to a legal framework of temporary use on the site with a limit of three years. In this case, the informal actors participated to the decision of the fate of RAW Temple.

In the mediation and negotiation process between temporary users, property owners and authorities, the organizations play a crucial role. They bring different actors together and provide a communication between them during the process of temporary use. They can create the legal framework to launch temporary uses including the contracts with owners, permits, support and organization.

All in all, temporary uses may be performed by public, private or civil society actors. These actors may vary from artists to civil society groups and charities to community organizations. Temporary uses question who the alternate actors are and how these actors can change the urban space. Not only the artists and architects but also the creative forces and local community have some roles to participate in the development process like recognizing, shaping and communicating projects for their communities (LaFond, 2010). In that sense, temporary uses may be initiated by informal actors such as individuals, community group or local neighborhoods and formal actors such as architects, creative forces, public authorities or private organizations. In this context, public authorities should undertake a steering role to provide collaboration between different actors (Arlt, 2006; Lehtovuori and Ruoppila, 2012). In this context, temporary use offers alternate actors participating with alternate temporary uses.

## **2.9 Categorization of Temporary Use**

There are many approaches to constitute the different forms of temporary use like the consensus on the theoretical definition of temporary use. These varying typologies are categorized according to the type of programs the temporary use offers, the duration and repetition of the temporary uses, the spatial conditions, authorities' approaches, etc.

Blumner (2006) categorizes the temporary uses based on the uses of the examples from Germany and America into six headings: parks and gardens (i.e. playgrounds, urban agriculture, etc.), art and culture (i.e. exhibitions, workshops, etc.), sports and recreation (i.e. skateboard parks, beach volleyball, etc.), entrepreneurship (i.e. newly established companies, etc.), parking and storage areas, alternative shelter (i.e. caravan parks, tent cities, etc.). Considering this comprehensive definition of different types of temporary uses, the categories of parks, and gardens, art, and culture, sports, and recreation, and entrepreneurship have the potential to contribute to the enhancement of public spaces with the assigned temporary activities for people. These are the activities encompassing the culture creative, commercial creative and recreational activities. However, parking and storage area do not offer any contribution to public spaces, and alternative shelters are not included to the framework of this study.

Henricson (2009) makes a typology depending on the aim of the temporary uses and the time spent on the project. He divides the temporary uses into three: small business, cultural scenes and meeting places by the use of vacant buildings and/or converted spaces (i.e. cafés, sport halls, green spaces and playgrounds), workshops, art projects and other events by the use of open urban space or other available space with a desired result other than permanent use (i.e. art exhibitions, art installations, workshops and festivals), and spontaneous and informal actions (i.e. 'Reclaim the Street' actions, guerrilla gardening or Strikes). These typologies respectively refer to long-term use (have an initial time scale of 1 year), medium-term use (take place 1-6 months) and short-term use (take place 1 week, as the time to plan the action usually is not considered).

Stevens and Ambler (2010), especially focusing on the Europe's city beaches as an example of temporary use, make a distinction between central and marginal spaces. It may be asserted that this distinction defines two different understanding of temporary use because of the way it acts. The central spaces having even some practical and legal limitations aims to attract residents and visitors by intensifying the use in the project area. On the other hand, the application of temporary use in the

marginal spaces shows how new functions can be plugged into the location. Following this focus on the different types of temporary uses by their spaces, it may be asserted that the characteristics of both central and marginal spaces may be appropriate for the realization of temporary uses. These are the spaces that are open to public use and have the potential for the discovery of new possibilities.

Lehtovuori and Ruoppila (2012) make an analysis of typology of the temporary use by considering the public authorities' approach to temporary use in strategic planning and development: consistent, project-based, centralized-idealistic and best practices:

- In consistent approach, temporary use is considered as a part of long-term regeneration with adequate resources and authorities who follow the process.
- In the project-based approach, temporary use is considered as a part of long-term regeneration with limited resources.
- In centralized-idealistic approach, temporary use is understood on a strategic level, but resources have not been distributed for the realization of temporary use.
- In best-practices approach, local temporary uses are considered for a broader policy-making and subsequent realization.

Although the typology study made by Lehtovuori and Ruoppila (2012) does not constitute a direct approach on the improvement of public spaces by temporary uses, it may create a ground for the idea expressing the significant role of different actors for the collective good of the public by showing the supportive role of authority to the process.

Oswalt et al. (2011, 133) provide a typology study under eight headings in relation to the way the temporary uses interfere to the vacant areas and they describe the typologies considering the relationship between site in long-term perspective and temporary uses:

- Stand in: Temporary uses do not have any lasting effect on the location, but only use the vacant space for the time available.

- Impulse: Temporary use gives an impulse for the future development of the site by establishing new programs/new programs cluster at a certain location.
- Consolidation: Temporary use establishes itself at a location and is transformed to a permanent use. The consolidation can also take place at a different location.
- Coexistence: Temporary use continues to exist (in a smaller size) even after establishment of a formal permanent use at the location.
- Parasite: Temporary use is developed in dependence of existing permanent uses and takes advantage of existing potentials and availability of space.
- Subversion: Temporary use is interrupting an existing permanent use (institution) by squatting as a political action. However, this occupation is normally of a very limited time period, it effects the squatted institution and results in change of the institution. In the situation of the squatting different uses than normal are established at the location.
- Pioneer: The temporary use is the first ‘urban’ use of the site, establishing a way of settlement, which might become permanent.
- Displacement: A permanent institution is displaced for a limited period of time and during this time established in an improvised way as a temporary use.

Németh and Langhorst (2014) categorize temporary use into two groups:

1. Temporary use which does not leave traces and permanent changes to existing surfaces and structures. The physical elements used in the project area are removable and are not permanently attached to ground and other surfaces.
2. Temporary use which leaves permanent traces and changes to the existing surfaces and structures like the alteration of existing structure, the removal of pavement, construction of new structures, changes to micro-topography of site, etc.

Different from other studies, Madanipour (2017) defines the different forms of temporariness that interfere as a result of the temporary uses into three: embedded temporariness referring to the basic ephemeral condition of life (i.e. periodic events, festivals and street markets), intentional temporariness referring to the changes as a result of some planned actions (i.e. interim use of space), and experiential temporariness referring to the events in how the temporariness is experienced in urban space (i.e. aesthetic animation of urban space through the use of color and movement).

All in all, it may be asserted that the categorization of temporary uses may vary according to the concept they are grouped. The authors groups temporary uses by considering the type of activities taking place in the space, the duration and repetition of the temporary uses, the different space types, etc. At that point, it is valuable to probe the role of space and time on the definition of the different forms of temporary use.



## **CHAPTER 3**

### **THE CONTRIBUTION OF TEMPORARY USE ON PUBLIC SPACES**

In this part of the study, the aim is to investigate the interaction between temporary use and public space to investigate the contribution of temporary use on public space. The spatial and temporal conditions for the realization of temporary use have been identified through the notion of space and time in case of depletion and repletion. Following the discussion on the relation between temporary use and public space, the parameters of the contextual properties of public space are shortly examined. Lastly, the parameters of temporary use introduce to determine the conceptions through which the impact of the temporary uses on public spaces is discussed.

#### **3.1 Spatial and Temporal Conditions for Temporary Use**

According to the theoretical framework for the relation between space and time defined in the introduction of the study, space and time are not separate entity; they are joint together. Both the space and time play a crucial role for the spatial and temporal conditions that trigger the realization of temporary use. The togetherness of different interactions of space and time define different ways for temporary use to interfere to the urban context. These interactions may be mainly described through depletion or repletion in both space and time.

##### **3.1.1 The Notion of Space and Time in Case of Depletion**

The togetherness of space and time through depletion provide the potential spatial and temporal conditions to initiate temporary uses in the spaces that have fallen out of use for a long time with no proposed type of use within near future. These spaces

may be the spaces that do not have legally and physically assigned functions such as urban spaces between building blocks or next to railroad track, abandoned sites and buildings, unbuildable areas etc. They also occur in the time that has been defined by a period when nothing is happening, or by a period between the other two periods when something is happening. In other words, space and time deplete of possible diverse activities that can be performed by many people.

The reasons for this vacancy in space and time may vary. They may occur due to design approaches (Trancik, 1986), neglectedness (Alanyalı, 2009), by-product of urban development processes, deindustrialization, or structural, economic or social changes and crisis. For this case, vacancy in space and time becomes an opportunity to initiate temporary uses.

This togetherness of space and time as the togetherness of “spatial vacuum” and “time gap” (Oswalt et al., 2011) creates the condition of uncertainty. The uncertainty attracts potential actors to develop a temporary use for the space to enhance the current condition defined by vacancy. The temporariness inspired by spatial vacuum and time gap regenerates both the space and time.

Temporary uses redefine the space and time by injecting temporary activities that can be performed by many and diverse people. They create temporal fluxes in the vacant area by exploring the potential inherent in it. In other words, temporary uses transform vacant areas to public spaces. The practice of temporary use prescribes people to occupy these spaces with their unexpected activities within the designed activities. As a result, temporary uses enliven the vacant area. A possible public space and common time to be shared by people are created for social interaction.

### **3.1.2 The Notion of Space and Time in Case of Repletion**

The togetherness of space and time through repletion provide the spatial and temporal conditions to trigger temporary uses in the spaces that replete with temporary activities that are performed by many and diverse people. These spaces

may be public spaces like streets, squares, and parks, and they are enriched by the designed temporary use. The presence of people and activities in these spaces creates the condition for discovering the possibilities of other different activities. They also occur in the time that has been commonly constituted by the involvement and contribution of different people to share the time they spend. In other words, space and time replete with possible diverse activities that can be performed by many people.

This togetherness of space and time creates the condition of possibility. This means that both space and time are open to trigger different possibilities. This possibility attracts the potential actors to develop a temporary use for the space by taking advantage of the condition of possibility. The temporariness inspired by the presence of people and temporary activities injects dynamism to both the space and time.

The space and time that replete with the presence of people and activities inherently provide physical and social ground for people to meet and interact. As it is mentioned above, this is the particular case that occurs in public spaces. Public spaces can host many temporary activities that coexist successively, interact and overlap with other temporary activities. Temporary uses intensify the temporal fluxes taking place in public spaces by injecting alternate activities performed by many and diverse people. This intensifies the current vitality and diversity in public spaces. As a result, the alternate opportunities in public space and the common time to share are created for people to interact.

### **3.2 The Relation Between Temporary Use and Public Space**

In the relation between temporary use and public space, temporary use becomes an instrument to formulate new ways of interpreting and vitalizing the space. It acts by questioning the current condition of the space, and by following this recognition, it can generate and nurture new alternative ideas for space. The temporary use takes

place wherever space needs support for enhancement. This enhancement is provided by the temporary activities initiating socialization and bringing vitality to space.

The current use condition of the space has a direct impact on the way the temporary use interferes with space. Considering two forms of the togetherness of space and time, the conditions of repletion and depletion provide a social and physical ground for the realization of the temporary uses. In other words, they can interfere with the spaces that are full of activities as in public spaces and lack of activities as in vacant areas.

Public spaces replete with many different activities performed by different people for different reasons. Temporary uses intensify this condition in public spaces by injecting other alternative activities. On the other hand, vacant areas deplete different potential activities that can be performed by different people for different reasons. Temporary uses redefine this condition by exploring possible temporary activities. These two different ways of interpretation of temporary uses make them frequent drivers for the enhancement of the public spaces.

The concept of publicness becomes crucial to discuss the relation between temporary use and public space. The temporary uses become publicly accessible, or publicly visible with the concept of publicness in public space. They become public with the condition of “being seen and heard by many” (Arendt, 1958). The temporary uses can take place in many places; however, public spaces are the places that provide both the physical and social ground for them to be noticed and shared. This possibility also works for the vacant areas that can be regarded as the potential public spaces with the involvement of temporary uses. Publicness as the most important characteristic for the temporary use environment enables temporary use to include different people with a richness in human variation and to provide different activities for sociability and vitality.

The enhancement of public spaces is implemented with correspondence of temporary use to the two attributes of the public space: physical properties and activities. Temporary use appeals to either two of the attributes or just one of the

attributes to provide social interaction. When temporary use becomes an intervention to the physical properties of the space, this may result in a temporary physical change or an involvement of a temporary structure that can initiate diverse temporary activities. The intervention to the physical properties of the space through temporary uses results in the intervention to the attribute of activities. For example, a temporary structure that is constructed in a public space or vacant area inherently initiates different temporary activities like a movie screening or a theatre performance. Besides, the enhancement of urban space is also possible with the design of a permanent structure or space hosting diverse temporary activities. On the other hand, when temporary use interferes with space by only appealing to the attribute of activities, the enhancement becomes true with an organization of the event. Any event taking place in a space may include temporary activities or temporary structures that are a part of the whole organization.

In its common sense, if the temporary use emerges due to:

- Physical properties; the temporary use is realized by construction of a temporary structure or a temporary or permanent design of the space,
- Activities; the temporary use is realized by an organization of an event.

Through the realization of temporary uses in public spaces, people find a reason to stay and spend time with other people in the project area. They can perform various designed and spontaneous activities within the use designed for a short period of time. This becomes a chance for people to meet, talk with each other, and socialize.

### **3.3 Parameters of Contextual Properties of Public Space**

The contextual properties that are mainly composed of location, form qualities, and existing use patterns have the potential to inherently initiate and intensify different temporary activities to enhance public spaces. They become significant factors providing a lively city scene with many people performing diverse activities.

The parameters out of the parameter of location are excluded from the framework of this study because form qualities and existing use patterns are composed of many different conceptions. Thus, these two parameters may become the content of a future study that needs a comprehensive investigation. However, the contextual properties are briefly examined in this section to provide a general essence for their contribution to temporary use.

Location as a contextual property is involved in this framework of the study to examine the position of the urban space: at the center or in the periphery. With designed temporary uses, even if the location of the place does not change, the contextual conditions brought about by its location may change. For example, an urban space in the periphery may attract people with an event organization. Thus, an urban space that people do not prefer visiting due to its location may become an activity zone within the defined period. In that sense, the urban space before temporary use and the urban space with temporary use need to be examined in the analysis of different examples in further sections.

Form qualities is a contextual parameter that contains different components and conditions working as a whole. For instance, as it is mentioned, the scale is a fundamental component that plays a crucial role in the movement patterns of users and intensity in activities. Moreover, the collection and position of diverse activities that are placed fine-grained in the urban space may be regarded as a component for form qualities triggering diversity, close and face-to-face contact. Diverse activities provide a different reason for people to come and stay in the urban space at different times of day and night. Following this, adaptability as a component for form qualities parameter responds not only to building forms but also to urban spaces. The urban spaces that can be adapted to different types and intensity of activities may ensure the flexibility in use. Thus, they have the potential to accommodate a wide range of activities that can be performed by many people. Besides, landmarks, green spaces, and water spaces may become people attractors for temporary activities like having lunch, meeting friends, etc.

Existing use patterns are another contextual parameter including many different components. In its common sense, it indicates the intensity of activities in a range from full of activities to lack of activities in the cases of depletion and repletion. This defines the presence and absence of active and alive life in urban spaces. However, an urban space may not be fully alive or empty.

All in all, it may be asserted that the contextual properties of public spaces have the potential to play an influential role in the realization of temporary uses. For this reason, although they cannot be studied in depth in this study, it has been briefly mentioned to indicate its value. Since they consist of many different components, they need to be discussed and analyzed separately for the investigation of their contribution.

### 3.4 Parameters of Temporary Use Enhancing Public Space

The literature of public space and temporary use is reviewed to assess the key common concepts for the realization of the temporary uses that affirmatively contribute to public spaces. These keywords have the potential to propose the parameters that can be applied to different contexts characterized by the notion of space and time in case of repletion and depletion.

Table 3.1 Parameters of Temporary Use to Enhance Public Space

Parameters	Definition in Literature
Inclusivity	Being seen and heard by many (Arendt, 1958) Richness of human variation (Raskin Eugene, as cited by Jacobs, 1961) Encounter “unknown” (Sennett, 1974) Contact with “others” (Gehl, 1971/2011)

Table 3.1 (continued)

Sociability	<p>Social interaction</p> <p>Triangulation (Whyte, 1980)</p> <p>Active and passive engagement (Carr et al., 1992)</p> <p>Varying degrees of contact (Gehl, 1971/2011)</p> <p>Giving chance to spectators to become an actor (Lennard and Lennard, 1984, as cited by Lofland, 1998/2017)</p>
Vitality	<p>The number of people and events across different times of day and night (Montgomery, 1998)</p> <p>The closed-grained diversity in the area (Jacobs, 1961)</p>
Flexibility	<p>The easy change of the use in the same space</p> <p>Allowing the presence of people with their different activities for a short period of time (Madanipour, 2017)</p>
Multiplicity	<p>Multiple use at the same time in the same space</p> <p>Offering new possibilities for a variety of activities (Madanipour, 2017)</p>
Discovery	<p>The desire for exploration (Carr et al., 1992)</p> <p>Variety and change (Carmona et al., 2010)</p>
Participation	<p>User engagement to design and production ideas</p> <p>Meaningful connections between people and place (Carr et al., 1992)</p>

### 3.4.1 Inclusivity

Inclusivity is one of the basic parameters of temporary use because it has a crucial role to make other parameters happen. By including all, the environment in which people can be “seen and heard by many” (Arendt, 1958) is created. It provides a richness of human variation and increases the chance to “encounter unknown” (Sennett, 1974) and “contact with other” (Gehl, 1971/2011).

Temporary uses are often involved as public use except in the case of temporary housing. They are designed and managed in a manner that they address to all by providing safety and comfort for all like local people, outsiders, tourists, sellers,

passer-by, etc. This provides the togetherness of many and diverse people with the offered activities like the art and culture events in the streets.

### **3.4.2 Sociability**

Sociability as a parameter of temporary use refers to the quality of enjoying meeting and spending time with other people. Temporary use injects designed social activities and these activities inherently initiate spontaneous activities. Thus, both designed activities and spontaneous activities make the public spaces and vacant areas place for socialization.

The temporary use has the potential to act as an external stimulus defined in “triangulation” (Whyte, 1980) and to create a social link between people by stimulating strangers to interact. The activities injected by temporary use provides a reason to talk with someone standing nearby. People experience the temporary use environment together and this occasion makes people feel that they know each other. In that sense, temporary use prompts social interaction among strangers.

Temporary use also provides the “passive and active engagement” (Carr et al., 1992) in public space and vacant areas. Some people prefer to take an active role in the activities while some people prefer to take pictures of the activities or just watch it. People can take active or passive roles in the temporary use environment. The spectators can become actors by taking an active role in the injected activities. Thus, “a varying degree of contact from active to passive contact” (Gehl, 1971/2011) is defined between people. In addition to social interaction, self-expression may play a role in socialization through temporary use. People can express their feelings, thoughts, or ideas in different ways like through writing, art, music, or dance. This may create a meaningful connection between people at the same time in the same space because there may be those who have similar feelings and thoughts.

All in all, temporary use becomes a reason for people to stay, meet, and spend time with other people. Both social interaction and self-expression have the potential to cultivate the space for socialization.

### **3.4.3 Vitality**

Vitality becomes a parameter with the role of various temporary activities in the temporary use environment to offer sociability. Temporary uses have the potential to generate vitality, at least for particular slots of time, by opening up the possibilities for social interaction.

According to Montgomery (1998, 97), vitality refers to “the number of people in and around the street (pedestrian flow) across different times of the day and night, the uptake of facilities, the number of cultural events and celebrations over the year, the presence of an active street, and generally the extent to which a place feels alive or lively”. This shows that the presence of people plays a crucial role in bringing vitality. Considering this, temporary use proposes a reason for people to be present in the project area. This may be achieved with events, temporary structures, or permanent structures initiating temporary activities. What they share is their role to propose a reason for people to stay in the project area with the temporary activities for sociability.

The degree of vitality in urban spaces has a direct relation with the different times of day and night. The use of urban spaces varies according to the time of day, day of the week, or season of the year. For example, some streets become more active in the daytime while some streets are quiet at night. The temporary uses have the potential to change the activity and movement patterns of people. They offer temporary activities at a particular time in a particular space. For instance, they can provide the night access to the urban spaces like with a night market or an open-air cinema in parks. The temporary use extends the active time by reorganizing the space with activities.

All in all, temporary use can provide vitality to space by bringing several people in and around the project area with different activities at different times of day and night. This may create an active space and a sense of liveliness for people about the space.

#### **3.4.4 Flexibility**

Flexibility as a parameter of temporary use enhancing public spaces refers to the easy change of temporary uses in the same space. This indicates the concept of flexibility in use which provides the space to house diverse short-lived activities performed by many people successively. The flexibility in use may cause diverse spatial configurations, the possible future expansions of space, and the different patterns of activities. This type of flexibility is different from the flexibility in form, spatial arrangement, and legal connotations.

Different forms of temporary uses have the potential to provide various activities for the same space. A temporary activity takes place and ends to leave the space for further temporary activities like the live performances in a temporary structure after a painting exhibition. The consecutive activities constantly activate the project area and make it alive with the presence of different people. The change in use may occur with the change in time (i.e. different activities designed for daytime and night) or with the possibility of other temporary activities (i.e. different activities performed by diverse people).

Madanipour (2017, 149) asserts that public spaces are often flexible in its content, “allowing different people to be present and different activities to take place for a short period of time”. This is a particular case for the temporary activities taking place in public spaces. The short duration of the activities enables the realization of other further activities. Public spaces can host both everyday activities and different major temporary activities that can change the course of social life. In other words, they can accommodate the predictable, repeated, and regular activities always

occurring in everyday and, the unpredictable and contingent activities changing the direction and routine of everyday life.

This shows that the issue of temporality becomes significant for the parameter of flexibility in use in public spaces.

### **3.4.5 Multiplicity**

Multiplicity becomes a parameter with the characteristic of temporary uses that usually offer more than one activity at the same time in the same space. Briefly, multiplicity means the multiple uses for the same space at the same time. The relation between multiplicity and temporary use may be discussed with the diversity in activities.

Many different activities designed in temporary uses may be performed by different people. This allows the presence of different people in the same space for different purposes. As Madanipour (2017) mentions, multiple uses offer new possibilities for a variety of activities within the same space. For instance, while some are participating in a workshop, the other one can visit the exhibition with the music coming from the live concert. In the temporary use environment offering multiple uses, it is possible to observe the varying degrees of engagement from passive to active. Thus, people can make their own choices to be an observer or an actor by participating in the activity mostly fitting to them. This may bring vitality and diversity by creating reasons for social interaction between people.

All in all, temporary uses have the potential to offer multiple uses for the same space at the same time. This inherently results in the overlap of different activities which may be the spontaneous ones found by people or the planned ones.

### **3.4.6 Discovery**

Discovery becomes a parameter with the potential of temporary use to initiate the desire and “the delight in new and pleasurable experiences” (Carr et al., 1992). The relation between the discovery and temporary use may be discussed with the changes and new unexpected experiences offered by temporary use.

Discovery is often related to traveling from one location to another and going to new places to meet new people and learn about different socio-cultural relations. However, the alternative interpretations and interventions of temporary uses have a potentiality to provide discovery in the known spaces. As Carmona et al. (2010) assert, discovery depends on change and variety. This may indicate that discovery can occur when the elements of the known places change like the contrast or juxtaposition of elements. Temporary uses ensure a change in the physical qualities of the space and the routines of everyday life. The changes proposed in a creative-cultural way introduce a desire for discovery for people. Temporary uses introduce new experiences to explore the possibilities hidden in the known space.

All in all, temporary uses have the potential to give the opportunity of experiencing new things in the known spaces. The desire for exploration and discovery of people can be intensified by temporary use and this can result in excitement, surprise, or delight to learn new things.

### **3.4.7 Participation**

Participation becomes a parameter with the potential of the relationship between temporary use and participatory design to provide an alternate urban understanding. Both question the status quo and produce alternate solutions in alternate ways by focusing on the role and engagement of people. This potentiality in their relationship derives that people may engage with temporary use not only during its duration of realization but also during its design process. People may be invited to the design process of temporary use and become participants cooperating with the architects,

urbanists, researchers, etc. This gives the right to participants to express themselves and take action with their opinion, desires, and needs.

The participants can play a role at the several stages of the process: participate in the initial process for exploration and problem definition, participate to provide ideas and solutions for the detected problems, or even participate in the final process for construction. The togetherness of participatory design and temporary use is not only to consider the participants' opinions for the design but also to enable people to actively participate in the creation of proposals.

Carr et al. (1992) assert that user participation in design and management has the potential to provide meaningful connections between people and places. Participation gives a chance to participants to shape the experience of a place and this creates an attachment to the place for the participants.

All in all, the involvement of participatory design in the design process of temporary use transforms the project area by considering the desires and needs of the participants and creates a meaningful connection to place.

## **CHAPTER 4**

### **EVALUATION OF EXAMPLES OF TEMPORARY USES**

This part of the study introduces the different examples that are examined to discover the varying contributions of temporary use on public space. The examples are mainly divided into two: temporary uses instigated by physical properties (temporary structures, temporary design of urban space, and permanent design of urban space initiating temporary activities) and temporary uses instigated by activities (event organizations). The tables showing which example responds to which parameters are prepared for different forms of temporary uses. Lastly, according to the findings of examples, the contribution of temporary use on public spaces are put forward.

#### **4.1 Selection and Analysis of Examples for Temporary Use**

Examples primarily are examined according to the parameters of temporary uses that are inclusivity, sociability, vitality, flexibility, multiplicity, discovery, and participation to enhance public spaces. This analysis approach to examples aims to highlight the potential of temporary uses; it does not reduce the value and significance of the parameters of contextual properties. However, location is involved as a contextual characteristic of public space to the analysis of examples to determine the examples in urban central areas and periphery. The examples for temporary uses in smaller settlements are disregarded; the selections are from big cities. It should be noted that a more detailed study may involve other contextual properties.

The main criterion is to comprise the varying contributions of temporary uses on public spaces considering the parameters of inclusivity, sociability, vitality, flexibility, multiplicity, discovery, and participation. The intention is to reflect the

diversity in the examples of temporary uses in different conditions and environments. Due to the theoretical framework of this study exploring the contribution of temporary uses to public spaces, the examples of temporary housing are not included. Besides, the parking, and storage areas, and alternative shelters that are defined as temporary types by Blumner (2006) are also excluded since they may not have an impact on public spaces. All the examples indicate the temporary uses that are designed for public use. They express the different ways they have enhanced the spaces that they are injected in.

Almost any urban location may have the potential for housing different kinds of temporary uses. However, this study investigates the impact of temporary uses on the publicness of urban space. That's why the selected urban location should be fully accessible, inclusive, and open to further possibilities. The accessibility and inclusivity of urban space may change with the injection of temporary use like the temporary uses that are open to public use in privately-owned spaces for the defined period.

Considering the notion of space and time in case of depletion and repletion, it is concluded that the presence, and absence of people and the use condition of the spaces play a significant role in the realization of temporary uses. In unused, or under-used areas like vacant lots, abandoned areas and left-over spaces in which functions are not defined, the realization of temporary uses may occur to vitalize and make them publicly accessible. In central locations in which functions are already defined, temporary uses may be implemented in both publicly and privately-owned spaces that allow public use for a short duration.

After conducting the literature survey of temporary uses, it may be asserted that the varying examples of temporary uses correspond to the different types of public spaces defined by Carr et al. (1992). This means that the spaces with temporary uses often become public parks, squares, and plazas, markets, streets, playgrounds, community open spaces, greenways, and parkways, and atrium/indoor marketplace, and waterfronts, or they can intensify the activities occurring in these public spaces.

In addition to these public space types, the realization of temporary uses is observed in other emerged forms of public spaces, i.e. shopping malls, corporate plazas. Due to the questionability of the publicness of these forms, these examples are not included to the study.

The examples provide a general overview of realized examples and show how they affect public life in spaces. Although different temporary uses and spaces have different characteristics, they can be analyzed through the common parameters in the search for the enhancement of public spaces. In that way, it is possible to discover both the common characteristics and their differences.

The parameters of temporary use constitute a set of criteria for the analysis of the potential of temporary uses to enhance public spaces. The criteria considered for the comparison of the examples is listed in Table 4.1.

Table 4.1 The Set of Criteria Retrieved from Parameters

Parameters	Criteria
Inclusivity	Variety of users and user groups
Sociability	Social interaction and contact
	Self-expression
Vitality	Number of people
	Variety of activities
Flexibility	Change in time
	Change in activity with possibility of activities
Multiplicity	Multiple use at the same time
Discovery	Change and variety
Participation	Users' engagement in the design and construction of the space

#### **4.1.1 Change in Physical Properties Through Temporary Use**

Temporary uses instigated by physical properties actualize through temporary structures, temporary design of urban spaces, and permanent design of urban spaces to initiate temporary activities. The temporary structures and temporary design of urban spaces provide a short-term physical change to space by interrupting the fixity and permanence of the space. However, they do not only reproduce the physical characteristics of the space. They also redefine the opportunities for possible activities because their intention is to generate the conditions for new temporary activities that can appear in the space. This causes a change both in physical characteristics of space and activities taking place in these spaces. On the other hand, the permanent design of urban space provides long-term changes to space by creating physical conditions appropriate for ever-changing temporary activities.

Below, the examples for various temporary uses discussed by focusing on their contribution to the enhancement of public spaces with a reference to the parameters of temporary use.

##### **4.1.1.1 Temporary Structures**

The Convergence Stop (Taksim Pavillion) is a temporary structure designed by IND (Inter National Design) in 2020. The temporary structure is firstly located in Taksim Square in İstanbul and then, moved to Bağcılar Square in İstanbul. It is also planned to move the temporary structure to other locations in the city such as Bakırköy Square, Waterfront Regulations between Salacak-Harem and Kadıköy Square (Archdaily, 2020). The main actor has been the Municipality of İstanbul Metropolitan / Cultural Heritage Project Directorate has initiated the redesign of several public spaces with the participation of İstanbul residents for enhancing the urban life in the city and urban design competitions will be held for the public squares in the city. As part of this process, the residents can participate in the workshop, exhibitions, panels, and forums having the slogan of "tell me your opinion" and "be

part of the city”. The Istanbul residents will vote the finalist of the urban design competitions and this makes the temporary structure the place for discussions about the city. The temporary structure is designed as a meeting, activity, and exhibition structure that is made up of a stage spirally surrounded by two amplifiers facing to each other with the wooden steps on the steel structure. The facing amplifiers have the potential to initiate social interaction, expression of ideas, and discussions.

In this example, the temporary use provides sociability through social interaction and contact. People can observe other people performing temporary activities and engage with them in various activities like live music performances. Besides, the temporary structure slightly proposes self-expression through the participation of people in the redesign process of the public squares in the city. The temporary structure participates residents in the decision-making process of the competitions initiated by the municipality. The residents have an opportunity to express their opinions and ideas in the panels and forums that can be held for the redesign process of public squares. They become the participants of this process, and they may observe the realization of this design process that they are apart. This may create a sense of attachment for them to place and enhance the relationship between residents and public squares. Although this kind of expressing an opinion is a slight version of participation, it may valuable for the connection between user and city. It is also significant to note that the temporary structure offers discovery with its gradually elevated steps from the ground level. This provides an unexpected experience for a familiar space with the creation of vista points.

The temporary structure mainly corresponds to the flexibility in use by providing an easy change of the uses. This may happen with the change in time or with the possibility of activities that can be performed by diverse people. The structure acts as a stage open to using for different activities. For example, different performances can take place on the stage and the exhibition takes place under the amplifiers. The temporary structure can accommodate multiple uses at the same time in the same space. Someone can visit the exhibition area while someone can listen to consent on the stage. Moreover, the structure may contain both the spontaneous uses found by

the citizens or the designed uses for the temporary structure. The overlap of spontaneous and develop uses have the potential to bring an intensified vitality and diversity to the public square.



Figure 4.1 Convergence Stop, İstanbul, Turkey

(Source: Akgül, n.d.)

Sky Garden is a suspended garden that is built for Beşiktaş International Garden and Flower Festival designed by So? Architecture for 9 days in 2016 in Ortaköy Square, İstanbul (Arkitera, 2016). The suspended garden with diverse plants provides seating and shelter for the shadow on the existing elevated square on the ground. It is also possible for people to look closer at the plants in pots at varying levels. People can move the pots that work with the pulley system by pulling them up, and down.

The temporary structure includes and addresses to the residents of the city. It defines an area for several and different people to come together and stay. It offers seating under a shelter made up of diverse plants in pots for people to sit. People can meet, sit and talk, make music, read books under the shelter. Although the temporary structure does not propose designed temporary activities creating a sense of flexibility in use and multiplicity, it has the potential to serve for these parameters through spontaneous temporary uses. The temporary structure provides the physical and social environment for people to find their temporary activities with a view to the sea and city. Besides, this project shows the desire of several people to use such

a temporary structure as a place for meeting and socializing at that point to spend time at different times of the day and night.



Figure 4.2 Sky Garden, Ortaköy, İstanbul

(Source: So? Architecture, n.d.)

TANDEM contains three self-sufficient structures designed by Creática ONG, Enorme Studio, PEZestudio, and Todo por La Praxis in Jardines del Arquitecto Ribera public square in the Malasaña neighborhood, Madrid for six months in 2017 (Creática ONG, n.d.). The three self-sufficient structures are an open classroom, an open stage, and an info-point for energy storage which gives the users a maximum of 2KW/hA to consume in a day (XXI, 2020). This energy is not only for personal needs and uses; it is also for the collective use of energy such as the projection of summer cinema, the performance of a small concert on the stage, or the performance of a storyteller in an open classroom. Furthermore, the citizens can change the color of the lighting in the square, taking selfies by using a webcam and leaving messages to be displayed on the LED screen.

In this example, temporary use provides collective exploration through change and variety in the public space with the acts of discovering and experimenting. The temporary structure creates an unknown change in a familiar space and the change in physical properties of the square results in a change in the activities of people. The energy given to consume creates a desire for exploration for the users. In addition to the users' mental development about the energy usage and consumption, the users can explore how their personal and collective use of energy for different activities

have an impact on the vitality of the public space. People can get the chance to observe different things that people are doing, even while moving through public space. This shows how people can activate public space by discovering and experimenting. Furthermore, the presence of three different temporary structure constitutes a variety in activities in the same public space, even at the same time because each of them has an assigned use that triggering many other spontaneous uses.



Figure 4.3 TANDEM, Madrid, Spain

(Source: Javier De Paz García, n.d.)

Add-On 20 Höhenmeter is a temporary structure that turns the public square Wallenstein-Platz into a center of urban interaction with the scenarios of living, eating, and communicating for six weeks in Vienna in 2005 (Add-on, n.d.). The structure consists of a twenty meters platform in which space modules are fitted to each other with a scaffolding system. It hosts a place acting as a stage and a living room at the square level, an information kiosk, a showroom made up of a container and city bus for designers and music labels to present their products, a music room, a canteen with a social room, a cantilevered office with internet access for public use, a panoramic café, etc. Moreover, it offers new vistas from a range of angles at different levels, and this provides a variety of perspectives for the everyday life of the square. At nights, different artists organize events cultivating the interaction within the urban environment such as performances, workshops, lectures, fashion shows, and audio-visual acts for people to participate.

This temporary use provides a reprogramming of public life in the public square. An active public life is planned, scheduled, and performed with both spontaneous and designed activities. In addition to the spontaneous activities taking place in different space modules, a program is designed as an outline of the orders of the events to be followed by people. In its common sense, the activities take place in a fine-grained manner. Through this, not only the participants experience this activation but also the passers-by explore public life more interactively.



Figure 4.4 Add-On 20 Höhenmeter, Vienna, Austria

(Source: Strasser, n.d.)

Folly for a Flyover is a temporary structure that transforms the area under a motorway in London, England into a temporary public space designed by Assemble Studio for nine weeks in 2011 (Assemble Studio, n.d.). The structure was commissioned by Create London and the construction was made with the participation of over two hundred volunteers to the process of design, construction, and programming (Create London, n.d.). By highlighting the importance of physical characteristics of space in determining its use, it is imagined that the temporary structure represents the trapped house of a landlord, who refuses to move another location, between the two roads (Assemble Studio, n.d.). The temporary structure by water houses a café, boat trips, and an extensive program of events, performances, and movie screening curated by Assemble in collaboration with Barbican Centre, and many local organizations and businesses.

In this example, temporary use provides the experience of socializing in an unfamiliar space. The area under a motorway becomes a temporary public space with the participation of volunteers to the different steps of the project and the engagement of people to the activities. People discover to spend time with many different activities in an unfamiliar space. The temporary structure becomes a reason for people to come to this place and spend time by socializing at different times of day and night. The temporary structure has the potential to provide flexibility in use. The activities can change with the possibility of different activities or they can change in time (i.e. boat trips during daytime and movie screening during the night). Several people perform different activities: eating, boat tripping, watching films, and involving in the workshops, talks, etc. This brings vitality to space where the vitality has not been evaluated before.



Figure 4.5 Folly for A Flyover, London, England

(Source: Vintiner, n.d.)

SuperKOLMEMEN is an example of a temporary structure designed for by Plastique Fantastique for one week in Three Smiths Square in Helsinki, Finland in 2016 for Helsinki Design Week (Lynch, 2016). The inflatable structure provides shelter for people by encircling a historic sculpture found in the square and it is used as a space for lectures, workshops, performances, and casual gathering places. The project by Plastique-Fantastique may be regarded as a contemporary version of the pneumatic structures designed by the group Haus-Rucker-Co in the 1960-70s in Vienna. Their one pneumatic structure called Oase No.7 was designed as a space for relaxation and

play that was emerged at the exterior façade of an existing building in 1972 (Spatial Agency, n.d.).

The temporary structure, in this case, defines a place where different people come together entirely by their choice. This enhances the publicness of the space with an increase in the number of people using public space. The temporary structure turns the square into space to stay instead of a space to pass through. People become more than just a pass-by or a passive onlooker; they find a reason to spend time in the pneumatic structure. The temporary structure emerges in everyday life by disrupting the familiar atmosphere of the known space with collective activities held for the event. This changes the perception of the space and defines a meaningful connection with space.



Figure 4.6 SuperKOLMEMEN, Helsinki, Finland, 2016

(Source: Plastique Fantastique, n.d.)

Table 4.2 Information and Properties of Temporary Structures Examples

	Convergence Stop	Sky Garden	TANDEM	Add-On 20 Höhenmeter	Folly for A Flyover	Super - KOLMEMEN
Location	urban central area	urban central area	urban central area	urban central area	urban central area	urban central area

Table 4.2. (continued)

Location (continud)	İstanbul, Turkey	İstanbul, Turkey	Madrid, Spain	Vienna, Austria	London, England	Helsinki, Finland
Space before temporary use	public square	public square	public square	public square	unused, or under-used area (left-over space)	public square
Space with temporary use	public square with intensified activity	public square with intensified activity	public square with intensified activity	public square with intensified activity	public space	public square with intensified activity
Date	2020	2016	2017	2005	2011	2016
Duration	varying	9 days	6 months	6 weeks	9 weeks	1 week
Repetition	recurring at different locations	one time	one time	one time	one time	one time
Temporary Use	meetings, concerts, exhibition	sitting, meeting, watching the view	an open classroom, an open stage and an info-point	a music room, a canteen with a social room, a living room, etc.	café, boat trips, events, and movie screening	lectures, workshops, events, casual meetings

#### 4.1.1.2 Temporary Design of Urban Spaces

The Union Street Urban Orchard proposes to transform the vacant area to a temporary urban orchard designed by Heather Ring of Wayward Plant Registry for three months, and its duration coincides with the biennial London Festival of

Architecture (Bishop and Williams, 2012). The orchard includes fruit trees and other edible parts, a seed library, a greenhouse, a living wall, a tire garden, and a railway arch turning to a cinema. It also provides many different activities and events like jam-making, beekeeping, willow sculpture, and discussions about alternative urban development. It also hosts a ping-pong table, a zero-carbon pod, and a pavilion. After three months, the orchard is dismantled, and ‘Make and Take’ sessions are held by the Architecture Foundation for people to build useful items from the materials.

Temporary urban orchard proposes many temporary activities for people to involve and socialize. The activities taking place in orchard become a reason for people to come and engage with other people. Especially, it provides social interaction through learning in the events like jam-making or beekeeping and self-expression through discussing in the events like discussions about urban development. The temporary urban orchard has the potential to create a desire for exploration for people to discover. People can learn and socialize by participating in different events taking place in the project area.



Figure 4.7 Union Street Urban Orchard, London, England

(Source: Massaro, n.d.)

The Davis Farmers’ Market is a market that is open on Wednesday afternoons and Saturday mornings in Central Park in California in 1976 (Davis Farmer Market, n.d.). The market landscape includes children’s play area, great central lawn, rose and butterfly gardens, a mature sycamore grove, a historical carousel, a raised wooden

deck encircling heritage oak tree, and a teen center (Francis and Griffith, 2011). It becomes a place for bumping into friends, and neighbors, sharing news, gossiping, and lobbying local officials (Carr et al., 1992). In addition to the market, there are also some special events organized by the farmers' market such as 'Picnic in the Park' in which live music, international food fair, Soroptimist beer, and wine garden, and children activities occur on Wednesdays from April to September (Davis Farmer Market, n.d.).

Temporary farmers' market activates the space and intensifies the activities occurring in the park on the market days. It proposes a varying level of engagement with a multifaceted activity in the market like buying food, and other goods, people-watching, being entertained, socializing, wandering, etc. The placement of the farmers' market in the park makes it an integrated program and structure of the park. They work together to serve different temporary activities for the local community. For instance, people shopping from the farmers' market may take a rest and spend time in the park, or people sitting on park benches may pass through the market on the way back. The events that are organized by farmers' market provides multiple uses like in the 'Picnic in the Park' event. In its common sense, it may be asserted

that the farmers' market increases the number of people using both the market area and park on the market days.



Figure 4.8 Davis Farmers' Market, Davis, California, USA

(Source: Davis Farmers' Market, n.d.)

Place au Changement is an example of a temporary design of an urban space that transforms the vacant area to a public square designed by Collectif Etc for three years in Saint-Étienne, France in 2011 (Collectif Etc, n.d.). The Public Planning Establishment of Saint Etienne (ÉPASE) calls for entries to enhance the vacant area in Saint Etienne and the Collectif Etc team wins the competition by proposing a project proceed with the engagement of local neighborhoods with professional assistance. This proposal allows the residents to participate in the process and transform the vacant area into a space for socialization. As a part of the whole change process, three workshops about carpentry, gardening, and illustration are held for residents. The square hosts film screenings, leisure activities, dinner for local people, and acoustic concerts to trigger social interaction. In 2013, the redesign process of the site within the scope of the International Design Biennale was launched and space was redesigned with the participation of residents and professionals.

For this case, temporary use provides collective participation with residents in collaboration with professional assistance. Residents are invited to engage with each

other in participatory design and express their point of view during the design process. The temporary use of the urban space provides short-lived participation and experience to enhance the relationship between people. As Carr et al. (1992: 27) assert: “By observing other people and their activities and participating with them in shared tasks, the experience of a community can be confirmed, enabling people to feel that they are part of a larger group in an active manner”. This experience of being a community and working together makes the design process of temporary use valuable in terms of the concepts of public and publicness.



Figure 4.9 Place au Changement Public Plaza, Saint-Etienne, France

(Source: Public Space, n.d.)

Granby Park is a temporary park that transforms the vacant area to a public space developed by Upstart Art Collective for one month in August-September 2013 on a Dublin City Council site in Dublin (Moore-Cherry, 2016). The volunteers were involved in the construction and operation of the temporary park and were responsible for different roles such as related to park management, back office, sport, etc. To organize an arts program, an open call for submissions for temporary installations, performances, educational and creative activities were held. The temporary park hosts an education hub space, 30 artist installations, a cafe, a children’s play area, a 300-person amphitheater, graffiti wall & boules pitch, surrounded by planting and furniture (A2 Architecture, n.d.).

In this example, the collaboration created with the volunteers plays a crucial role in designing a temporary park from a vacant area. The local community was involved at different steps of the design and construction process of the temporary park. People are brought together entirely by choice to open up space cooperatively. The project gives volunteers the right to speak and act for the community that they are a part of. This attitude of the project may create a meaningful attachment for people to the temporary park. The civil society-led approach provides publicness by encouraging citizens to use and engage in public space.



Figure 4.10 Granby Park, Dublin, Ireland

(Source: Till, 2013.)

Lent Space is a vacant area owned by church but temporarily open to public use (Konigsberg, 2009) with the temporary design of the urban space. It is a temporary art space and sculpture garden commissioned by the Lower Manhattan Cultural Council and designed by Interboro partners for three years in Manhattan, New York in 2009. It consists of movable planters, flowering shrubs, tree nursery and operable fences. Some exhibitions, performances, and a series of installations and sculptures are programmed in the park. Due to the desire of the client to enclose the space with fences, the four sides of the site are surrounded by operable fences that can independently rotate (Interboro Partners, n.d.). They act not only as fences but also as benches and wall panels for exhibitions. These fences blur the boundary between inside and outside by creating social spaces for people to spend time.

The temporary art space and sculpture garden becomes a public space for people to spend time and socialize. It is for the use and enjoyment of the public in their daily life. The movable fences acting as benches play a crucial role because they have the potential to become urban furniture for people. The rotation ability of the benches provides to facilitate conversation in smaller groups. People can create a social space by rotating two different panels facing to each other. Moreover, like in the public parks, this garden also proposes multiplicity and flexibility in use. For instance, while someone is looking at the installations and sculptures in the park, someone else can sit on the benches and chat with friends. Besides, the garden can house diverse short-term temporary activities performed by many people successively.



Figure 4.11 Lent Space, New York

(Source: Interboro Partners, n.d.)

Table 4.3 Information and Properties of Temporary Design of Urban Spaces

Examples

	Union Street Urban Orchard	Davis Farmers' Market	Place au Changement	Granby Park	Lent Space
Location	urban central area	urban central area	urban central area	urban central area	urban central area

Table 4.3 (continued)

Location (continued)	London, England	Davis, CA, USA	Saint- Étienne, France	Dublin, Ireland	New York, NY, USA
Space before temporary use	unused, or underused area (vacant space)	public park	unused, or underused area (vacant space)	unused, or underused area (vacant space)	unused, or underused area (vacant space)
Space with temporary use	temporary urban orchard	farmers' market	temporary public plaza	temporary park	temporary art space and sculpture garden
Date	2010	1976-...	2011-2014	2013	2009-2012
Duration	3 months	twice a week	3 years	1 month	3 years
Repetition	one time	recurring at the same space	one time	one time	one time
Temporary Use	jam-making, beekeeping, willow sculpture and discussions about alternative urban development	shopping, making picnic, different events	film screenings, leisure activities, dinner for local people and acoustic concerts	music events, art installations, playground, café, etc.	wandering, looking installations and sculptures, sitting on the benches

#### 4.1.1.3 Permanent Design of Urban Spaces to Initiate Temporary Activities

Before discussing the examples for the permanent design of an urban space initiating temporary activities with a reference to the parameters of temporary use, it is significant to note that parks and squares may be regarded as the most fundamental

examples for this form of temporary use. They are the places for the enjoyment of the public with their facilities for rest and recreation. People can walk for pleasure, play guitar, read books, sit on the benches to watch their surroundings and make a picnic, children can run and play on grass, etc. Parks and squares host not only the people who stay for a while but also the people who promenade and pass through. These are the temporary activities that are performed by many people in parks and squares in their everyday life. Urban spaces suggest the persistence of public life only in this way.

In this discussion, The Parc de la Villette project by Bernard Tschumi in Paris in 1982 plays a crucial role in its pioneering role to increase the flexibility and possibility of the park by protecting its conventional meaning. The site was abandoned land from the meat market and slaughterhouses that dated back to 1860 (Souzo, 2011). It was designed in a series of three specific layers which are lines, points, and surfaces. The superimposition of the systems of lines, points, and surfaces (Tschumi, 1996) defines an architectural program of non-programmed use in the park. As Tschumi (1996) asserts, the aim of the free built of follies to place on an abstract plane is to explore the possible meanings in the future. These follies become the focus of the short-term cycles of uses found and performed by many and diverse people.

Parc de la Villette is an example of the permanent design of an urban space that can initiate different temporary activities. In this case, temporary use responds both to the physical properties and activities. The layering approach for the general layout of the park increases the flexibility in use and further possibilities. Different from the examples in temporary structures and temporary design of urban space, this project offers temporary use for permanent structures located in an urban park. These structures have the potential to create spaces for social interaction and self-expression. The follies independent from any connotations provides the flexibility in use and multiplicity. Each folly can be ready for a new activity after any activity and different activities can occur in different follies at the same time. This enables the urban park to explore the possibilities of the changing programs and uses that can be

found by people over time. The layering approach for temporary use inherently provides a continuous change that takes place through the activities of people in follies to discover. It invites people to participate in the discovery of temporary activities. This has the potential to bring vitality at different times of day and night. The desire for exploration and discovery may be stimulated when the changing human activities take place in follies which becomes familiar elements for the park.

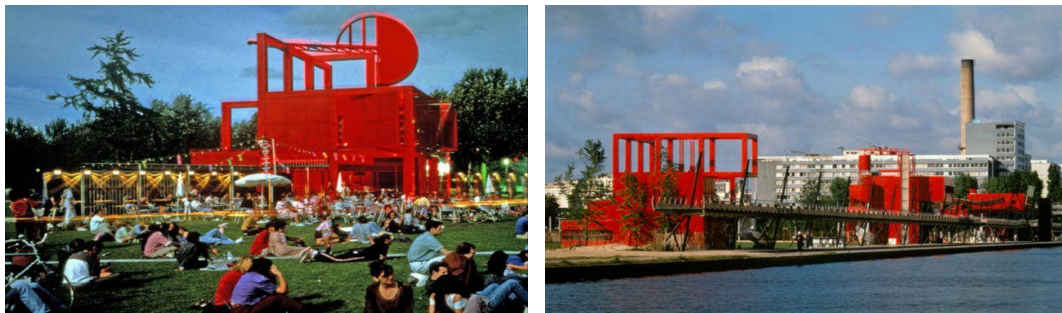


Figure 4.12 Parc de La Villette, Paris, France

(Source: Bernard Tschumi Architects, n.d.)

Superkilen may be considered as another example challenging the initiation of temporary activities through a permanent park design. When the railway line that had previously taken this route was dismantled, the strip of land was remained unused (Bravo, 2018). By the collaboration with BIG, Topotek 1, and Superflex, it is designed as a half a mile-long urban park located in the ethnically diverse and socially challenged neighborhood in Copenhagen, Denmark in 2012 (Archdaily, 2012). It includes the samples of benches, street signs, trees, and other urban furniture from across the world to reflect the multi-ethnicity of the neighborhood. The urban park has been divided into three zones, each with a different color marking a specific function. Red Square allows the residents to meet with each other through additional areas for outdoor physical activity and games. The Black Square whose painted curvy white lines moving around the urban furniture to avoid touching them acts as an urban living room with its permanent tables, benches, and grill facilities. The Green Park with its soft and grassy hills is a green landscape and playground where people can spend time by making picnics, sunbathing, or doing workouts, etc.

The inclusive character of the project has the potential to provide a richness of human variation and diversity in activities performed by many people in the activity zones. The activity zones separated with different colors respond to both the physical properties and activities. In its common sense, these zones provide a physical and social ground for people to discover diverse types of temporary activities that can be injected into public life. This creates an opportunity to bring vitality and diversity to the urban park by embracing flexibility in use and multiplicity. The activities taking place in the urban park can change in time or change with the possibility of further temporary activities. This means that any activity can be followed by other alternate activities because the environment cultivates this condition. Moreover, people can perform multiple uses at the same time in the same activity zone as making a picnic and doing a workout in Green Park. These activities can easily change and be replaced by different temporary activities. Activity zones invite several people to the park at different times of the day and night. In this manner, the permanent design of urban space for the initiation of temporary uses creates a sense of activeness and liveliness in the urban park.

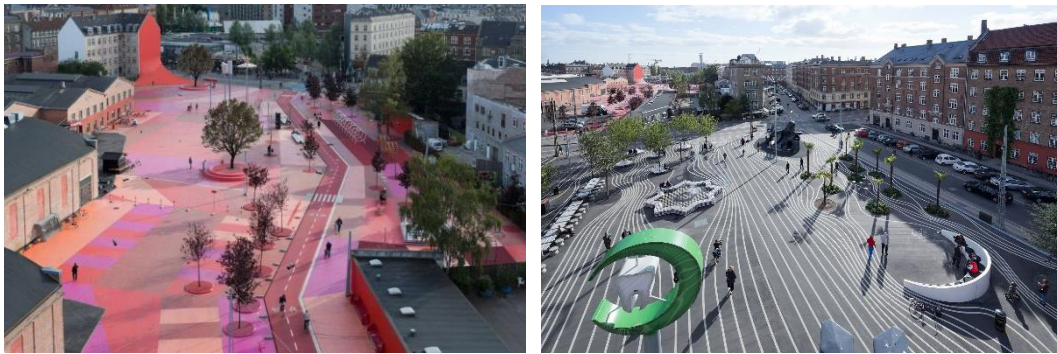


Figure 4.13 Superkilen, Copenhagen, Denmark

(Source: Baan, n.d.)

The coastal arrangement from Bostanlı Stream to Mavişehir Fishing Port in İzmir can also be evaluated in the context of the permanent design of urban spaces initiating temporary activities. Just like the temporary activities in parks, the arrangement of coastline initiates temporary activities performed by numerous and

diverse people such as walking, meeting, making a picnic, playing volleyball, etc. The arrangement mainly increases the public use of the coastline by creating the physical and social conditions for temporary activities that can appear in the space. For instance, Bostanlı Footbridge and Bostanlı Sunset Lounge, which is the first phase of the studies of the "Karşıkıyı" project proposed by İzmir Metropolitan Municipality within the scope of the "Design Strategy Plan to be Implemented in Strengthening the Relationship of Izmir with the Sea" (İzmir / Deniz) in 2016, enriches the existing coastal use culture (The Municipality of İzmir, 2018). A social space where people relax and enjoy the view with a series of viewing platforms extending to the sea and a footbridge connecting the opposite shores is created.

The pedestrian bridge and sunset terrace respond to both the attributes of physical properties and activities. In its common sense, temporary use provides a physical ground for a common temporary activity, watching the sunset and sea. This common temporary activity brings numerous and diverse people together and initiates other different temporary activities. It attracts a variety of individuals and groups and provides a place for social interaction. In this case, temporary use contributes to publicness through the temporary activities performed by diverse people within the designed conditions of the urban space. Although the footbridge and lounge do not offer flexibility in use and multiplicity through designed temporary activities, they create an opportunity for people to find their temporary activities. Thus, these parameters come true in time with the possibility of different activities of residents.



Figure 4.14 Bostanlı Footbridge and Sunset Lounge, İzmir, Turkey

(Source: Studio Evren Başbuğ, 2016)

Hoyt Street Garden is a community garden initiating different temporary uses. The site was abandoned and owned by the New York City Presbytery (Boerum Hill Association, n.d.). A group of neighbors cleaned up space and created a community garden in 1975. The community garden has housed many concerts, story hours, dance performances, art exhibits, book giveaways, and even a wedding reception. The garden is open to public use, but the entrance is controlled by the neighbors with the free keys that have been given to them. The neighbors having the keys leave the gate open and encourage others to come in. At that point, it is valuable to mention about People's Park in Berkeley, California which is realized in a more natural and unplanned way. With the tough struggles to appropriate the park, it has remained unfenced and open for daytime use of students, residents, and street people (Carr et al., 1992). As Carr et al. assert (1992, 213), it exemplifies "the symbolic power of open space". This shows that people always have a desire to appropriate a place to perform their daily temporary activities.

In Hoyt Street Garden, the site that is open to public use was designed, developed, and managed as a community garden by local neighbors on vacant land. The local neighbors create a place to carry out their desired activities like resting, meeting, etc. In that sense, the community garden becomes a permanent place for sociability. Like in other public parks, the community garden has the potentiality to propose flexibility in use and multiplicity. The attempt of local neighbors to achieve a degree of control on the community park may be considered as a threat for public use. However, as Carr et al. (1992) assert, one group or individual may restrict the use and freedom of the rest of the public in claiming a space to fulfill its needs.



Figure 4.15 Hoyt Street Garden, Brooklyn, NY, USA

(Source: Boerum Hill Association, n.d.)

The project Park 'n' Play designed by JAJA in collaboration with Totalentreprenør 5e byg, Søren Jensen Ingeniører, LOA, DGI, Rama Studio Architecture in Copenhagen in 2016 (JAJA Architects, n.d.) may be considered as a structure initiating temporary activities. The competition project held by By & Havn was asking for a conventional parking house structure with a green façade and an activity landscape on the rooftop. In addition, it is a part of the first phase of the Nordhavn masterplan. It challenges the conventional meaning of the parking house. The monofunctional parking house transformed into a public amenity with a green façade and an activity landscape on the rooftop of the parking house. The playground consists of swings, trampolines, jungle gyms, cross-fit equipment, monkey bars, and more. It attracts playful and attractive children, adults, and elderly. Besides, it provides a view of the city skyline.

This example provides the play behavior as a temporary activity that is open to public use in the playground on the rooftop of the parking house. People discover this changing and unpredictable play behavior. This shows that temporary uses available for public use do not need to only be on the land, but also in the program of structure or building. It means that it is possible to create public spaces inherently initiating temporary activities in the design of new buildings and even in the existing buildings. However, the vitality that the temporary activities bring to the site may be limited to

the area of the playground. Besides, the playground may become a place for discovery and sociability. People can discover the view of the city skyline and their surroundings from a high level as a new experience for a familiar area. Also, the structures in the playground have the potential to propose flexibility in use and multiplicity.

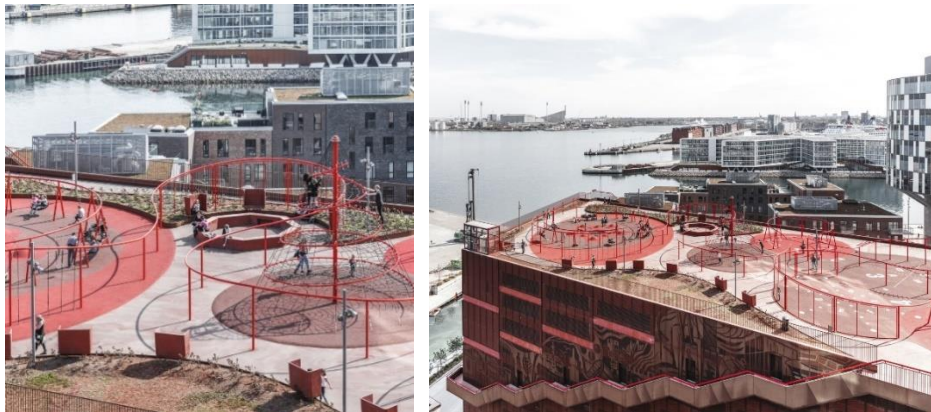


Figure 4. 4.16 Park ‘n’ Play, Copenhagen, Denmark

(Source: Jaja Architects, n.d.)

Table 4.4 Information and Properties of Permanent Design of Urban Spaces

	Parc de La Villette	Superkilen	Bostanlı Pedestrian Bridge and Bostanlı Sunset	Hoyt Street Garden	Park ‘n’ Play
Location	urban central area	urban central area	urban central area	urban central area	urban central area
	Paris, France	Copenhagen, Denmark	İzmir, Turkey	Brooklyn, NY, USA	Copenhagen, Denmark
Space before temporary use	unused, or under-used area (abandoned area)	unused, or under-used area	urban central area (coastline)	unused, or under-used area (abandoned area)	unused, or under-used area

Table 4.4 (continued)

Space with temporary use	public park	public park	waterfront parks	community garden with intensified activity	Playground and parking house structure
Date	1982	2012	2016	1975	2016
Duration	permanent	permanent	permanent	permanent	permanent
Repetition	-	-	-	-	-
Temporary Use	outdoor activities	outdoor physical activities, games, making picnics, sunbathing, or doing workouts	watching the sunset and sea, meeting, socializing	run and play, watching the view	watching the view of the city skyline, playing in playground

#### 4.1.2 Change in Activities Through Temporary Use

Temporary uses instigated by activities actualize through the events organized by a group of people for a unique intention. They offer a change in the activity and movement patterns of the urban space. The staging of an event attracts people and involves them in the activity as actors or spectators. In other words, the activities planned in the events become the reason for people to socialize and the instrument that brings diversity and vitality to the urban space. The events create opportunities for a form of public life which offers social interaction and communication.

The modern urban life has increasingly housed several event organizations that become an integral part of personal and social life. The examples may vary from music festivals and carnivals to marathon events and food fairs. In addition to their functions, their scales may also vary. They may take place in a street, in a public square, or even in the whole city. For instance, during the annual Montreal International Jazz Festival, the major part of the city's core becomes a part of the festival to stage many outdoor performances. For this study, the examples for event organizations are chosen considering their potential to create a discourse on the temporary use of public space. Below, some examples of events are discussed by focusing on their contribution to the publicness of urban space with a reference to the parameters of temporary use.

Once in A Month the Street Is Ours (Ayda Bir Gün Sokak Bizim) is an event organized by the collaboration between the Municipality of Beşiktaş, Karacaoğlan Youth Center, Our Street (Sokak Bizim) Association, non-governmental organizations and volunteers in different streets of İstanbul, Turkey in 2019. (The Municipality of Beşiktaş, 2019). The selected street is closed to vehicular traffic and open to the use of pedestrians, bikers, disabled and elderly members of society. For example, the event on May 11, 2019, took place between 11:00-18:00 in Mecit Ali and Behçet Necatigil Street in Beşiktaş, İstanbul with the participation of the local community to the workshops of painting, dance, drama and music and the activities of biking on street, exchanging toys and clothing, etc.

In this case, temporary use provides the discovery of the activities to people that can occur in the streets by inviting the local community to streets with social activities. It brings vitality to the street by increasing the number and variety of people and activity at different times of the event day. This has the potential to improve the quality of street life and regain the character of the active street used by people to the city.

Park(ing) is a temporary park built within the white lines of the parking place next to the sidewalk for two hours by Rebar in San Francisco in 2005 (Merker, 2010).

The following year, it evolved into a one-day global event in which participants built their temporary parks in parking areas, and in 2007, a larger event was organized to build temporary parks with the participants around the world. Rebar treated the idea of creating a temporary park in the parking area as an open-source and encouraged people to reinterpret the idea if it was not used for commercial uses.

In this case, temporary use provides a discovery of variety by designing a change in a familiar city. This is a way of discovering and manifesting what should be done in places for socialization and relaxation. As Carr et al (1992, 87) assert, “chance discovery can uncover places worth a stop, and a brief pause may provide a new resource of future use”. The temporary use enhances the publicness of the space by defining places where different people create and come together entirely by their choice. This may enable people to recognize and discover the potential spaces to transform into public spaces. Besides, it mainly corresponds to the flexibility in use by accommodating various activities performed by many and diverse people like making meditation with participants after a live guitar performance. Dependent on the condition, the temporary park can also provide multiple uses like reading books and discussing books with other people at the same time. Moreover, this case shows how the residents of cities have a desire and need to transform an appropriate area to space for sociability. Temporary use in Park(ing) spaces gives the residents a voice to respond to their urban needs. These spaces may be regarded as places for social interaction created with the participation of different people in the streets.



Figure 4.17 Park(ing) Day in 2005 (left) and 2007 (right) in San Francisco, CA

(Source: Rebar as cited by Merker, 2010)

Wolności Square accommodates the practice of temporary use with the Malta Festival Poznan in Poznan, Poland in 2016 (Atelier Starzak Strebicki, n.d.). It is a recurring event taking place in a large public square that is made up of a concrete surface with no greenery area and this physical condition of the public space prevents the daily use of the space by people in their daily life. For Malta Festival Poznan 2016, this large area is divided into smaller zones in which activities occur and these are the zones for children, temporary café and restaurant, music and theatre stage, and workshop space.

In this case, temporary use provides the availability of different activities and places within the space. It enhances the publicness of the public square with an observable variety of users and activities. In that sense, it refers both to attributes of physical properties and activities. It consists of different activity zones that form the different parts of the whole festival. These activity zones provide multiple uses at the same time in the same space. Someone can listen to music and dance at the zone of music and theatre stage while another one drinks and eats at the zone of temporary café and restaurant. The participants of the festival can move from one activity zone to another and experience different activity zones whenever they want.



Figure 4.18 Malta Festival Ponzan, Poland

(Source: Bieniaszczyk, n.d.)

The Market Street Prototyping Festival is an event held in 2015 and 2016 in San Francisco with the involvement of small-scale and temporary urban implementations

to the street (Market St. Prototyping Festival, n.d.). The street accommodates prototypes that were built by architects, designers, community groups, everyday residents, etc. ranging from performance spaces, relaxation zones, educational spaces, green spaces, and interactive art installations for three days. It built upon the five-year project of Better Market Street Project led by the San Francisco Planning Department in collaboration with the Yerba Buena Center for the Arts to enhance the public life in Market Street (Gehl Architects, n.d.). After documenting the relationship between users, their behavior and movement pattern in the street through a survey called as Public Space Public Life Survey in 2011, the project called Street Life Zones was developed by Gehl Architects to activate sidewalk with small-scaled design and reprogramming of the street for social and lingering activities. In 2013, the first Living Innovation Zone called Whispering Dishes was installed to create a place to experiment: The two sets of dishes facing to each other enable the two whispering people to hear each other even in the street noise. Then, in 2015, the Market Street Prototyping Festival took place for 3 days.

In this case, temporary use increases the number of people using and promenading in the street which becomes more attractive and livelier. It allows for a mix of personal and collective activities defined in zones for the entire length of the street. This provides multiple uses performed by diverse people at the same time in the same street. Thus, the street becomes a place for lingering, socializing, and spending time with other people rather than being a street to pass through.



Figure 4.19 Whispering Dishes, San Francisco, USA

(Source: Gehl Architects, n.d.)

Paris Pláge is the city beach for one month in summer on the river Seine in Paris since 2002 (Steven and Ambler, 2010). It is officially defined and promoted as an event by the municipality and designed as fully accessible by a wide range of users. The temporary beach event houses various free activities, including performances, art, and environmental exhibitions, libraries, educational workshops, dance lessons, climbing, art classes, and book clubs. The focus of the event is social inclusivity and engagement.

The temporary summertime beach Paris Pláge is an unexpected use in a familiar space of everyday life. People discover sunbathing as a new experience in the urban central area. Besides, it provides different kinds of activities within the project area. The city beach changes the physical properties of the space and interrupts the routines of everyday life. It provides programmed events that encourage social interaction and engagement. Besides it has become an initiating type for many cities around the world.



Figure 4.20 Paris Plage Event, Paris, France

(Source: Tomas van Houtryve, n.d.)

Table 4.5 Information and Properties of Event Organizations Examples

	Once in A Month the Street Is Ours	Park(ing) Day	Malta Festival Poznan 2016	Market St. Prototyping Festival	Paris Plage Event
Location	urban central area	urban central area	urban central area	urban central area	urban central area
	İstanbul, Turkey	San Francisco, USA	Poznan, Poland	San Francisco, USA	Paris, France
Space before temporary use	street	park areas near sidewalks	public square	street	coastline
Space after/with temporary use	street with intensified activities	public space	public square with intensified activities	street with intensified activities	public beach along waterfront
Date	2019	2005	2016	2015	2002-...

Table 4.5 (continued)

Duration	1 day	1 day	12 days	3 days	1 month
Repetition	recurring at different spaces	recurring at different spaces	recurring at the same space	one time	recurring at the same space
Temporary Use	painting, dancing, biking, participating workshops, meeting	meeting, chatting and other varying activities injected by people	temporary café and restaurant, music and theatre stage	spending time in different activity zones	performance, exhibitions, libraries, workshops, dance lessons, climbing, art classes and book clubs

#### 4.2 Discussion on Various Examples for Temporary Use

The examples are proposed to discover the contribution of temporary use on the publicness of urban space through a series of parameters extracted from the literature review on public space and temporary use. They are examined according to their correspondence to the concepts of inclusivity, sociability, vitality, flexibility, multiplicity, discovery, and participation. Although there are plenty of examples for temporary uses, the ones selected for this study are directly instigated by the parameters. Considering these parameters of temporary uses, it is questioned whether:

- the temporary use involves a variety of users and user groups,
- the temporary use initiates social interaction, contact and self-expression,
- the temporary use provides the presence and participation of several people and the occurrence of activities at different daytimes and night,

- the temporary use enables the change in activities with the possibility of other temporary activities,
- the temporary use provides multiple use at the same time,
- the temporary use causes a change and variety to discover,
- the temporary use proposes community involvement to different steps of the project.

Table 4.6 The examples of temporary uses referring to parameters at different levels.

Different Forms of Temporary Uses		Parameters						
		inclusivity	sociability	vitality	flexibility	multiplicity	discovery	participation
Temporary Structures	Convergence Stop	✓	✓	✓	✓	✓	✓	✓
	Sky Garden	✓	✓	✓	✓	✓		
	TANDEM	✓	✓	✓	✓	✓	✓	
	Add-On 20 Höhenmeter	✓	✓	✓	✓	✓	✓	
	Folly for A Flyover	✓	✓	✓	✓	✓	✓	✓
	Super-KOLMEMEN	✓	✓	✓	✓			

Table 4.6 (continued)

Temporary Design of Urban Space	Union Street Urban Orchard	✓	✓	✓	✓	✓	✓	
	Davis Farmers' Market	✓	✓	✓	✓	✓		
	Place au Changement	✓	✓	✓	✓	✓	✓	✓
	Granby Park	✓	✓	✓	✓	✓	✓	✓
	Lent Space	✓	✓	✓	✓	✓		
Permanent Design of Urban Space	Parc de LA Vilette	✓	✓	✓	✓	✓	✓	
	Superkilen	✓	✓	✓	✓	✓	✓	
	Bostanlı Pedestrian Bridge and Bostanlı Sunset Terrace	✓	✓	✓	✓	✓		
	Hoyt Street Garden	✓	✓	✓	✓	✓		✓
	Park'n Play	✓	✓	✓	✓	✓	✓	
Event Organizations	Once in A Month the Street Is Ours	✓	✓	✓	✓	✓	✓	
	Park(ing) Day	✓	✓	✓	✓	✓	✓	✓
	Malta Festival Poznan 2016	✓	✓	✓	✓	✓		

Table 4.6 (continued)

Event Organizations (continued)	Market Street Prototyping Festival	✓	✓	✓	✓	✓		
	Paris Plage Event	✓	✓	✓	✓	✓	✓	

For each type of public space, it is possible to discover how temporary use contributes to the publicness. The contextual properties of public spaces play a valuable role in this contribution. Although the examples in varying scales ranging from an area by the roadside to squares, a rooftop of a building to squares, and parks to waterfronts are examined in the study, temporary uses contribute to publicness in various ways. By considering this, the contribution of contextual properties is briefly explained in the following paragraph.

According to the findings of the study, temporary structures are usually located in public squares in urban central areas. The reason for this may be to benefit from the existing use patterns in and around the urban space. For example, temporary use in a public square containing a sculpture, or water element may benefit from the existing use pattern related to the existing elements in the square. The square has already a reason to attract people, and temporary use has the potential to contribute to the intensity of activities performed by many people in the public square. Besides, it can be said that public squares are proper public spaces out of other types in terms of its scale to accommodate temporary structures. Also, the temporary design of urban spaces is generally located in vacant lots in urban central areas. Like in temporary structures, the reason for this is to benefit from the existing use patterns around the urban space. The adaptability of the urban space to varying conditions that temporary uses offer becomes a crucial concept. At that point, it is valuable to question whether the vacant lot has the potential to be adapted to different functions. This situation can be questioned only if the urban space remains vacant. Moreover, the permanent design of urban spaces initiating temporary activities is also affected

by the contextual properties such as in Bostanlı Pedestrian Bridge and Bostanlı Sunset Terrace. The waterfront becomes significant to city life for many reasons like recreation, relaxation, etc. through temporary activities. Also, the contextual properties have an impact on the organizations of events. For example, it may be asserted that the linear form quality of the street becomes a significant factor for the organization of the event as in St. Market Prototyping Festival. The activity zones are placed to ensure liveliness at different points along the street. All in all, these brief explanations about contextual properties may indicate their potential to contribute to the publicness in the realization of temporary uses as a preliminary study for further studies on this area.

After this short explanation of the contribution of contextual properties, the study asserts that different temporary uses refer to different parameters at different levels. The findings from the examples show that there is no differentiation and grouping for the relationship between different forms of temporary uses and parameters. The parameters of inclusivity, sociability, and vitality have a strong influence on both temporary uses instigated by the physical properties and injected activities to search the contribution to public spaces. All examples ensure these three parameters because these three out of seven parameters mainly indicate the presence of numerous and diverse people and the social interaction and/or self-expression through temporary activities in the project area. In its common sense, it may be argued that inclusivity, sociability, and vitality may be regarded as the fundamental parameters for an affirmative contribution to public space. On the other hand, the parameters of flexibility in use, multiplicity, discovery, and participation have the potential to intensify this contribution. These parameters increase the presence of many and diverse people and the realization of various temporary activities for the same space.

In its common sense, temporary use may contribute to public space with its intention to increase the occurrence of various temporary activities performed by many people. For example, it may define its existence through its intense and continuous use programming as in Add-On 20 Höhenmeter which proposes a fine-grained

reprogramming of public life with diverse activities or through the increase in the number of people actively using public space as in SuperKOLMEMEN and Market Street Prototyping Festival.

The creation of the proper physical and social conditions through temporary uses implements an observable variety in activities within the space. For instance, temporary use in Superkilen and Malta Festival Poznan 2016 proposes the availability of different kinds of places for different temporary activities within the space. Sometimes, the proper condition for temporary activities can be implemented by the design of one common temporary activity that can trigger and initiate other temporary activities as the activity of watching sunset and sea in Bostanlı Footbridge and Sunset Lounge and as the activity of buying foods, and goods in Davis Farmers' Market. The variety of activities and users creates opportunities for social interaction and self-expression concerning the content of the project. In some examples, social interaction or self-expression is defined through other parameters like discovery and participation. For example, temporary use in Union Street Urban Orchard contributes to public space with social interaction through learning and self-expression through discussion.

Temporary use often defines a reason for people to stay and spend time as a result of a change in physical properties of the space and activities in the space. These designed changes may create a desire to explore and discover new experiences, activities, or vistas. For instance, in TANDEM, temporary use contributes to public space with the exploration of change and variety in the known physical space. The acts of discovering and experimenting enable people to socialize and interact. Other examples for the discovery of a change and variety in a familiar space are Park(ing) Day, One Day A Month the Street Is Ours (Ayda Bir Gün Sokak Bizim), and Paris Plage. In these examples, people discover different activities that can take place in the project area. Temporary use provides not only the discovery of unexpected activity in a familiar space but also the discovery of temporary activities for socialization in an unfamiliar space as in Folly for A Flyover.

The temporary use often provides the participation of people to the different steps of the design and construction of projects as in Place au Changement and Granby Park. In Convergence Stop, residents have a chance to express their opinions to the redesign process of public squares in the city. This may also be regarded as a type of participation, but it may be lighter than others. For participants, taking a role in the project and sharing a task with other participants have the potential to create a sense of community, belongingness, and attachment to space. Besides, the sense of community and the connection to space can also be discussed for the Hoyt Street Garden that is designed by local neighbors for their desired activities in everyday life.

All in all, different forms of temporary uses may have different contributions to the enhancement of public spaces by instigated by different parameters at different levels.

Table 4.7 The contribution of Temporary Uses on Public Spaces

Different Forms of Temporary Uses		Contribution of Temporary Uses
Temporary Structures	Convergence Stop	bringing people together for social interaction and self-expression within the designed activities
	Sky Garden	social interaction by providing seating and shelter
	TANDEM	collective exploration through change and variety by discovering and experimenting
	Add-On 20 Höhenmeter	a fine-grained reprogramming of public life with many and diverse activities

Table 4.7 (continued)

Temporary Structures (continued)	Folly for A Flyover	discovery of the experience of socializing in an unfamiliar space
	SuperKOLMEMEN	increase in the number of people using public space
Temporary Design of Urban Space	Union Street Urban Orchard	social interaction through learning and self-expression through discussing
	Davis Farmers' Market	social engagement in a multifaceted activity in market
	Place au Changement	observable variety of activities and users defined with participation
	Granby Park	bringing people together entirely by their choice to open up a space
	Lent Space	bringing a reason (art and sculpture) for people to stay and socialize
Permanent Design of Urban Space	Parc de La Villette	exploration of the possibilities of the changing activities
	Superkilen	availability of different kinds of places and activities
	Bostanlı Pedestrian Bridge and Bostanlı Sunset Terrace	initiating different temporary activities with the occurrence of a common temporary activity

Table 4.7 (continued)

Permanent Design of Urban Space (continued)	Hoyt Street Garden	creation of a place for sociability with desired activities in everyday life
	Park'n Play	discovery of the city skyline and the changing, and unpredictable play behavior
Event Organizations	Once in A Month the Street Is Ours	discovery of different activities that can take place in streets
	Park(ing) Day	discovery of variety through design a change in a familiar space
	Malta Festival Poznan 2016	availability of different kinds of places and activities within the space
	Market Street Prototyping Festival	increase in the number of people promenading and participating in a more active street
	Paris Plage Event	sociability and discovery of an unexpected experience in a known place

## CHAPTER 5

### CONCLUSION

This part of the study evaluates and summarizes the research findings developed in the preceding chapters through the examples of temporary uses. Then, based on the findings, the chapter ends by seeking the future projections of the study that can guide further studies on temporary uses contributing to public spaces.

#### 5.1 General Proceeding and Findings of the Study

Throughout the study, the aim has been to comprehend and examine the contributions and potentials of temporary use to enhance public spaces, and to provide inspiration for architects, urban designers, and other actors through a set of parameters for public space enhancement.

In order to determine the conceptions through which temporary uses can be evaluated, the study firstly investigated the concept of public and public space. Definitions for an understanding of public and public space have been made. The inquiry focused on the importance of the presence of many and diverse people and the social interaction between *unknown*, *other*, and *many*. Following this, the two interweaving attributes of public space have been investigated, as illustrated in Figure 5.1.

## **The two interweaving attributes of public spaces**

<b>Physical properties</b>	<b>Activities</b>
The physical urban attribute (form) creating a place for human activity	The social urban attribute performed by many and diverse people for social interaction

Figure 5.1 The two interweaving attributes of public space.

Following this, the concept of temporary use is discussed with its context and definers. The conception of temporary use has been elaborated as a tool to provide the physical and social ground for people to socialize and interact. After an analysis of the different approaches to the categorization of temporary uses, it is asserted that space and time play a crucial role in the realization of temporary uses and they work together to provide proper physical and social conditions. In that sense, the notions of space and time in case of depletion and have been elaborated, as figured in Figure 5.2.

## **Spatial and temporal conditions for the realization of temporary use**

<b>In case of depletion</b>	<b>In case of repletion</b>
The lack of the activities and the presence of people – as in vacant areas	The full of the activities and the presence of people – as in public spaces

Figure 5.2 Spatial and temporal conditions for the realization of temporary use

It has been evaluated that the condition of repletion and depletion provides the realization of temporary use in public life. Regardless of the realization of the temporary use in case of depletion or repletion, temporary use formulates new ways of interpreting and vitalizing the space. It takes place wherever space needs enhancement.

The parameters as the key concepts for temporary use that have been retrieved from the survey of public space and temporary use have been revealed: inclusivity, sociability, vitality, flexibility, multiplicity, and discovery. These parameters are analyzed as the most determining factors to investigate the contribution of temporary use on public space. In addition to these parameters temporary use introduces, the parameters defined by contextual properties of public space are briefly examined. In its common sense, these parameters are evaluated as location, form qualities, and existing use patterns. However, these parameters out of the parameters of location are excluded from this study because form qualities and existing use patterns are composed of many different conceptions. They need to be investigated comprehensively as a further study in this area.

The study also involved the examples, as the examples of temporary use in public spaces and vacant areas, which have the potentiality to provide enhancement of public space. What they all share is their characteristic to initiate temporary activities performed by numerous and diverse people. It was observed that the different examples of temporary use included different parameters at different levels. By referring to the two attributes of public space, the grouping of these temporary uses is made in accordance with the way they interfered with the space: temporary uses instigated by physical properties or temporary uses achieved through injected activities, illustrated in Figure 5.3.

### **Temporary Uses**

<b>Physical properties</b>	<b>Activities</b>
Temporary Structure	Event organizations
Temporary Design of Urban Space	
Permanent Design of Urban Space	

Figure 5.3 Temporary uses physical properties and activities.

The study asserts that the temporary use instigated by the physical properties also respond to the activities and vice versa. The intervention to the physical properties to space directly, and indirectly affects the quality and content of the activities taking place in that space. Although temporary structures, temporary design of urban space, and permanent design of urban space refer to a change in physical qualities of space, they inherently refer to a change and variety in human activities. Any proposal for the physical characteristics of space in the framework of temporary use inherently and potentially initiates possible alternate activities for enhancement. On the other hand, the intervention to the activities through event organizations are also held with some interventions to the physical properties of the space like defining activity zones with temporary structures. Like the interweaving attributes of public space which defines public life together in public spaces, the attributes of physical properties and activities for the realization of temporary use also interweave to each other.

One of the results of this study is the appearance of spontaneous uses within the designed temporary uses which was evident in many examples. The designed uses have the potential to initiate spontaneous uses and they may overlap in the project area. Besides, the permanent design of urban spaces, generally, has an intention to initiate spontaneous temporary activities to suggest the persistence of public life.

According to the findings of examples of temporary uses,

- Temporary structures usually appear in the urban central areas, especially in squares in which the notion of space and time are characterized by the case of repletion. Generally, they provide the discovery of an unexpected and unfamiliar experience in known space, i.e. taking people to a certain height for a view from different perspectives. Moreover, they become the reason for people to stay and spend time in the project area. This increases the number of people in and around the project area at different times of day and night.
- Temporary design of urban spaces usually appears in the unused or vacant areas in which the notion of space and time are characterized by the case of depletion. For this form of temporary use, the participation of local neighbors

in the design and construction process becomes a crucial parameter for the implementation of temporary uses. Furthermore, like in the parks and squares, the temporary design of urban spaces offers both spontaneous and designed temporary activities. The vitality that is brought with the overlap of spontaneous and designed uses can be intensified with events like workshops, live performances, discussion platforms, etc. That's why they inherently propose flexibility in use and multiplicity.

- Permanent design of urban spaces mainly encompasses the examples of public parks, community open spaces, squares, and waterfronts. It has the intention to initiate temporary activities, especially spontaneous ones. This form of temporary use provides both the physical and social ground for people to perform their temporary activities. This characteristic suggests the persistence of public life in the project area. Considering the examples, the project area may be a land, building, or an existing structure. Besides, they have the potential to house designed temporary uses like temporary structures and events due to their flexibility in use and multiplicity. This may result in the overlap of spontaneous uses and designed uses.
- Events may take place in streets, squares, waterfronts, the whole city, etc. in which the notion of space and time are characterized by repletion. They intensify the rhythm of social life with a designed activity. They usually provide the availability of different kinds of places and activities within the project area. This attracts people and becomes a reason for them to stay. Moreover, focusing on the movement and activity of pedestrians is a common approach for event organizations.

In addition to these specific findings of different forms of temporary uses, the study made clear that temporary uses to contribute the publicness of an urban space should provide the followings at different levels:

- *Inclusion of many and diverse people*; implying the presence of people and the richness of human variation within the space,

- *Socialization through more whelming creative-cultural activities rather than commercial creative activities; injecting new alternate activities for people to meet and spend time with others,*
- *The sense of liveliness and vitality about the space; bringing vitality through a number of people performing a number of activities in and around the space at the different times of the day and night,*
- *The easy change of activities in the same space; leaving the space for the further possible activities after an activity takes place and ends,*
- *The multiple use of the same space at the same time; overlapping of the activities taking place in the space by including both the spontaneous activities found by people and the designed activities within the temporary use,*
- *The stimulation of the desire of exploration with changes in the known space; exploring the possible new experiences through the changing physical qualities and changing human activities,*
- *The participation of people to design process at different steps; creating collective experiences and meaningful attachments for people to space.*

All in all, the study does not offer overall design decisions for temporary uses appearing in public spaces. However, the study forms a framework for an understanding of the value of temporary use for the enhancement of public space. The elaborated parameters for the realization of temporary use may help the formation of a comprehensive approach to the interaction between temporary use and public space.

## **5.2 Future Projections of the Study**

The present study aims at setting out a preliminary study of temporary uses contributing to public spaces by discussing different examples with a reference to the parameters retrieved from literature survey.

At the time the thesis was written, there was a pandemic that affected the whole world in many different aspects of life. Public spaces were most affected by this situation because people are staying out of public spaces except for their essential needs. As a solution for the problem of using public spaces, white lines creating circles are drawn on grounds to protect the required distance between other people (i.e. white social distance circles on the grass in parks). Although these solutions seem contrary to the concept of acting free that comes from the definition of public space, they revealed the new normal and realities of life. People are learning what it means to lead a life with certain limitations. In that regard, a further study may be done to discover the contribution of temporary use on public space in the time of the pandemic. Temporary use in urban context may be re-evaluated as a tool for social interaction by following the social distance rules in public spaces.

The varying contributions of temporary uses in different conditions and environments have already been depicted through a discussion conducted over these parameters. However, as it is observed from several examples, there may be more than these parameters and contributions. Thus, the parameters can be increased in number. New parameters can be derived from the social, cultural, historical, and other various aspects of public life. In addition to them, the parameters extracted from the contextual properties of public spaces can be included. This list of parameters with definitions and criteria may be evaluated as an analysis method, checklist, or even as a guideline for different types of temporary uses and public spaces.

The issues of organization, management and regulation emerge as a critical point in the implementation of temporary uses in both urban central areas, and unused, or under-used areas. The future research in this area can also involve further investigation on these issues. The different approaches of countries on these issues for the implementation of temporary uses can be collected and discussed. A comparative study may be done to analyze what kind of laws and regulations encourage the realization of temporary uses contributing to public spaces. Then, the policy in Turkey for the organizational system, management and regulation of the

temporary use process should be investigated. This analysis may be valuable to develop a policy evaluating and supporting temporary uses.

Another important dimension of the subject has been represented as the steering role of authority and their relationship with the potential actors. The role of different actors has been discussed as the definers of temporary uses. It has been asserted that the public authorities and managers of temporary uses should take a role to collaborate with different actors for the common good. Yet, a further study may be done to investigate the varying and affirmative interrelationships between the actors involved to the implementation process of temporary use. Following this future study, temporary use as an urban understanding may be appreciated by figuring out its nature, and potentials, and the design strategies for the enhancement of public spaces through temporary uses may be developed.

## REFERENCES

- Action. [Def 1]. In Websters 1913 Online, Retrieved June 06, 2020 from  
<https://www.websters1913.com/words/Action>
- Activity. [Def 1]. In Websters 1913 Online, Retrieved June 06, 2020 from  
<https://www.websters1913.com/words/Activity>
- Add-On 20 Höhenmeter. (n.d.). Add-On. Retrieved July 13, 2020 from  
<http://www.add-on.at/cat23.html>
- Akgül, Y. (n.d.). [Picture of Convergence Stop/Taksim Pavillion] [Photograph]  
Archdaily. <https://www.archdaily.com/934719/taksim-pavilion-intentional-design>
- Alanyalı A., E. (2009) Redefining Leftover Spaces: Value and Potentiality for the City. Germany: VDM Verlag Dr. Muller Aktiengesellschaft & Co. KG
- Arendt, H. (1958). The human condition. Chicago: University of Chicago Press
- Aristotle. (1996). Physics. In Bostock, d. (Eds.) and Waterfield, R. (Trans.), Aristotle Physics. (pp.1-231). New York: Oxford University Press.
- Arlt, P. (2006). Urban planning and interim use. In F. Haydn and R. Temel (Eds.), *Temporary urban spaces: concepts for the use of city spaces*. Basel: Birkhäuser.
- Audi, R. (Ed.). (1995). The Cambridge Dictionary of Philosophy, Cambridge: Cambridge University Press.

- Baan, I. (n.d.). [Picture of Superkilen] [Photography]. Archdaily. Retrieved June 21, 2020 from <https://www.archdaily.com/286223/superkilen-topotek-1-big-architects-superflex>
- Bieniaszczyk, M. (n.d.). [Picture of Malta Festival Poznan 2016] [Photography]. Divisare. Retrieved June 19, 2020 from <https://divisare.com/projects/341112-atelier-starzak-strebicki-temporary-public-space-for-malta-festival-poznan-2016>
- Bishop, P., & Williams, L. (2012). *The temporary city*. London: Routledge.
- Blumner, N. (2006). *Planning for the unplanned: tools and techniques for interim use in Germany and the United States*. Deutsches Institut für Urbanistik, Occasional Papers.
- Bostanlı Mavişehir Coastal Arrangements. (2018). The Municipality of İzmir. Retrieved June 26, 2020 from <https://www.izmir.bel.tr/tr/Projeler/bostanli-mavisehir-kiyi-duzenlemeleri/1281/4>
- Bravo, D. (2018). Superkilen. (Julie Wark, Trans.). *Public Space*. Retrieved August 15, 2020 from <https://www.publicspace.org/works/-/project/g057-superkilen>
- Carmona, M., de Magalhães, C., & Hammond, L. (2008). *Public space: the management dimension*. London: Routledge.
- Carmona, M., Heath, T., Tiesdell, S., & Oc, T. (2010). *Public places, urban spaces: the dimensions of urban design*. Oxford: Architectural Press.
- Carr, S., Stephen, C., Francis, M., Rivlin, L. G., & Stone, A. M. (1992). *Public space*. New York, NY: Cambridge University Press.
- Castells, M. (2004). An introduction to the information age. In *The Information Society Reader*, Frank Webster, Raimo Blom, Erkki Karvonen, Harri Melin, Kaarle Nordenstreng, and Ensio Puoskari (Eds.). (pp. 138-49). London and New York: Routledge.

- Chase, J., Crawford, M. & Kaliski, J. (Eds.). (1999). *Everday urbanism*. New York: Monacelli Press.
- Cheshmehzangi, A., & Heat, T. (2012). Urban identities: Influences on socio-environmental values and spatial inter-relations. *Procedia-Social and Behavioral Sciences*, 36, 253-264.
- Colomb, C. (2012). Pushing the urban frontier: Temporary uses of space, city marketing, and the creative city discourse in 2000s Berlin. *Journal of urban affairs*, 34(2), 131-152.
- Colquhoun, A. (1989). *Modernity and the classical tradition: architectural essays, 1980-1987*. Cambridge: The MIT Press.
- Cosmopolitan. [Def. 1]. (n.d.). In *Websters 1913*. Retrieved February 19, 2020 from <https://www.websters1913.com/words/Cosmopolitan>
- Cupers, K., & Miessen, M. (2002). *Spaces of uncertainty*. Wuppertal: Müller und Busmann.
- Energy That Revitalized Public Space. (n.d.). XXI. Retrieved July 13, 2020 from <https://xxi.com.tr/i/kamusal-mekani-canlandiran>
- Ephemeral. [Def 1]. In *Webster 1913*. Retrieved November 30, 2019 from <https://www.websters1913.com/words/Ephemeral>
- Event. [Def 1]. In *Webster 1913*. Retrieved June 20, 2020 from <https://www.websters1913.com/words/Event>
- Francis, M., & Griffith, L. (2011). The meaning and design of farmers' markets as public space an issue-based case study. *Landscape Journal*, 30(2), 261-279.

- Franck, K.A. & Stevens, Q. (2006). Tying down loose space. In Franck, K. A. & Stevens, Q. (Eds.), *Loose Space: possibility and diversity in urban life*. (pp.1-33). New York: Routledge.
- Franck, K.A. & Paxson, L. (2006). Transforming public space into sites of mourning and free expression. In Franck, K. A. & Stevens, Q. (Eds.), *Loose Space: possibility and diversity in urban life*. (pp.1-33). New York: Routledge.
- Folly for A Flyover. (n.d.). Assemble Studio. Retrieved July 13, 2020 from <https://assemblestudio.co.uk/projects/folly-for-a-flyover>
- Folly for A Flyover. (n.d.). Create London. Retrieved July 13, 2020 from <https://createlondon.org/event/2011-create-art-award/>
- Franck, K., & Stevens, Q. (Eds.). (2006). *Loose space: possibility and diversity in urban life*. New York: Routledge.
- Gehl, J. (1971/2011). *Life between buildings: using public space*. (J. Koch, Trans.) Washington, DC: Island Press.
- Granby Park Dublin. (n.d.). A2 Architecture. Retrieved June 28, 2020 from <http://www.a2.ie/portfolio/granby-park/>
- Groth, J., & Corijn, E. (2005). Reclaiming urbanity: Indeterminate spaces, informal actors and urban agenda setting. *Urban studies*, 42(3), 503-526.
- Habermas, J. (1991). *The structural transformation of the public sphere: An inquiry into a category of bourgeois society*. Massachusetts: MIT press.
- Haus-Rucker-Co. (n.d.). Spatial Agency. Retrieved July 13, 2020 from <https://www.spatialagency.net/database/haus-rucker-co>
- Haydn, F., & Temel, R. (Eds.). (2006). *Temporary urban spaces: concepts for the use of city spaces*. Basel: Birkhäuser.

- Henricson, E. (2009). *Breakfast on A Street Corner, A Study on Temporary Land Use in Long-term Planning in Stavanger*. (Master's thesis). Swedish University, Agricultural Sciences, Alnarp.
- History of HSA. (n.d.). Boerum Hill Association. Retrieved August 11, 2020 from <http://boerumhillassociation.org/hoyt-street-association.aspx>
- History of the Davis Farmers Market. (n.d.). Davis Farmers' Market. Retrieved August 11, 2020 from <https://www.davisfarmersmarket.org/about-us/>
- Holland, C., Clark, A., Katz, J., & Peace, S. (2007). *Social interactions in urban public places*. Bristol: Policy Press.
- Hou, J. (Ed.). (2010). *Insurgent public space: guerrilla urbanism and the remaking of contemporary cities*. New York: Routledge.
- Intention. [Def 2]. In Webster 1913 Retrieved November 30, 2019 from <https://www.websters1913.com/words/Intention>
- Interim. [Def 1]. In Webster 1913. Retrieved November 30, 2019 from <https://www.websters1913.com/words/Interim>
- Iveson, K. (2013). Cities within the city: Do-it-yourself urbanism and the right to the city. *International journal of urban and regional research*, 37(3), 941-956.
- Jackson, J. B. (1986). A sense of place, a sense of time. *Oz*, 8(1), 3.
- Jacobs, J. (1961). *The death and life of great American cities*. New York: Random House.
- Janiak, A. (2020). Kant's Views on Space and Time. In Edward N. Zalta (ed.) *The Stanford Encyclopaedia of Philosophy* (Spring 2020 Edition). Retrieved May 25, 2020 from <https://plato.stanford.edu/archives/spr2020/entries/kant-spacetime/>

- Javier De Paz García. (n.d.). [Picture of TANDEM] [Photograph]. XXI. Retrieved July 13, 2020 from <https://xxi.com.tr/i/kamusal-mekani-canlandiran>
- Kamleithner, C. & Kohoutek, R. (2006). Temporary uses, deregulation and urbanity. In Haydn, F. & Temel, R. (Eds.), *Temporary urban spaces: concepts for the use of city spaces*, (p.25-37). Basel: Birkhäuser.
- Kelbaugh, D. (2007). Toward an integrated paradigm: Further thoughts on the three urbanisms. *Places*, 19(2).
- Konigsberg, E. (2019, September 16). An art park sprouts (for now) where new buildings were to grow. *New York Times*. Retrieved from <https://www.nytimes.com/2009/09/17/arts/design/17lent.html>
- LaFond, M. A. (2010). Cultivating sustainable development in Berlin's Freiräume. In J. Hou, (Ed.), *Insurgent public space: guerrilla urbanism and the remaking of contemporary cities*. (pp.61-70). New York: Routledge.
- Lang, J. T. (2005). *Urban design: a typology of procedures and products* (1st éd.). Oxford: Elsevier/Architectural Press.
- Lefebvre, H. (1992/2004). *Rhythmanalysis: Space, time and everyday Life*. New York: Continuum.
- Lehtovuori, P., & Ruoppila, S. (2012). Temporary uses as means of experimental urban planning. *Serbian Architectural Journal*, 4(1), 29-54.
- Lehtovuori, P., & Ruoppila, S. (2017). Temporary uses producing difference in contemporary urbanism. In Henneberry, J. (Ed.), *Transience and permanence in urban development*. (pp. 47-63). Hoboken, NJ: John Wiley & Sons.
- Lent space: An art space and sculpture garden in Lower Manhattan. (n.d.). Interboro Partnera. Retrieved August 11, 2020 from <http://www.interboropartners.com/projects/lentspace>

- Lofland, L. H. (1998/2017). *The public realm: Exploring the city's quintessential social territory*. New York: Routledge.
- Lydon, M. & Garcia, A. (2015). *Tactical Urbanism Short-term Action for Long-term Change*. Washington, DC: Island Press.
- Lynch, K. (1960a). The city image and its elements. In J. J. Gieseking, W. Mangold, C. Katz, S. Low & S. Saegert (Eds.), *The people, place, and space reader* (pp. 50-55). New York, NY: Routledge.
- Lynch, K. (1960). *The image of the city*. Cambridge, MA: Mit Press.
- Lynch, K. (1972). *What time is this place?* Cambridge, MA: Mit Press.
- Lynch, P. (2016). Plastique Fantastique Wrap Inflatable Intervention around Historic Sculpture for Helsinki Design Week. ArchDaily. Retrieved 19 Jul 2020. From <https://www.archdaily.com/795465/plastique-fantastique-wrap-inflatable-intervention-around-historic-sculpture-for-helsinki-design-week> (ISSN 0719-8884)
- Madanipour, A. (2017). *Cities in Time: Temporary urbanism and the future of the city*. New York: Bloomsbury Academic.
- Madanipour, A. (1996). Design of urban space: An inquiry into a socio-spatial process (p. 168). Chichester, England: John Wiley & Sons Ltd.
- Madanipour, A. (2018). Temporary use of space: Urban processes between flexibility, opportunity and precarity. *Urban Studies*, 55(5), 1093-1110.
- Madanipour, A. (1999). Why are the design and development of public spaces significant for cities?. *Environment and planning B: Planning and Design*, 26(6), 879-891.

- Make way for change. (n.d.). Collectif Etc. Retrieved June 13, 2020 from <http://www.collectifetc.com/realisation/place-au-changement-chantier-ouvert/>
- Markosian, N. (2016). Time. In Edward N. Zalta (ed.) *The Stanford Encyclopaedia of Philosophy* (Fall 2016 Edition). Retrieved May 20, 2020 from <https://plato.stanford.edu/archives/fall2016/entries/time/>
- Market St. Prototyping Festival. (n.d.). Retrieved June 13, 2020 from <http://marketstreetprototyping.org/about/history/>
- Massaro, M. (n.d.). [Picture of Union Street Urban Orchard] [Photograph]. Retrieved June 13, 2020 from <https://www.dezeen.com/2010/07/11/union-street-urban-orchard-by-heather-ring/>
- McDonough, J. K. (2019). Leibniz's Philosophy of Physics. In Edward N. Zalta (ed.) *The Stanford Encyclopaedia of Philosophy* (Fall 2019 Edition). Retrieved May 25, 2020 from <https://plato.stanford.edu/archives/fall2019/entries/leibniz-physics/>
- Merker, B. (2010). Taking place: Rebar's absurd tactics in generous urbanism. In J. Hou [Ed.], *Insurgent public space: guerrilla urbanism and the remaking of contemporary cities*. (pp. 45-58). London: Taylor and Francis.
- Montgomery, J. (1998). Making a city: Urbanity, vitality and urban design. *Journal of Urban Design*, 3(1), 93-116.
- Moore-Cherry, N. M. (2017). Beyond art in 'meanwhile spaces': Temporary parks, urban governance and the co-production of urban space. In M. Murzyn-Kupisz & J. Działek (Eds.), *The impact of artists on contemporary urban development in Europe* (pp. 207-224). Cham, Switzerland: Springer.
- Németh, J., & Langhorst, J. (2014). Rethinking urban transformation: Temporary uses for vacant land. *Cities*, 40, 143-150.

Nine design teams' placements at Beşiktaş Flower Festival. (2016). Arkitera. Retrieved June 20, 2020 from <https://www.arkitera.com/haber/9-tasarim-ekibinin-yerlestirmeleri-besiktas-cicek-festivalinde/>

Once in A Month the Street Is Ours (Ayda Bir Gün Sokak Bizim). (n.d.). Municipality of Beşiktaş. Retrieved June 19, 2020 from <http://besiktas.bel.tr/Sayfa/26229/ayda-bir-gun-sokak-bizim>

Oswalt, P., Overmeyer, K., & Misselwitz, P. (Eds.) (2011). Urban catalyst: Strategies for temporary use. Basel: Birkhäuser.

Parking house + konditaget lüders. (n.d.). Jaja Architects. Retrieved August 11, 2020 from <https://www.ja-ja.dk/project/konditaget-luders/>

[Picture of Bostanlı Footbridge and Sunset Lounge] [Photography]. Studio Evren Başbuğ. Retrieved June 26, 2020 from <https://www.studioevrenbasbug.com/post/bostanl%C4%B1-footbridge-sunset-lounge>

[Picture of Davis Farmers' Market] [Photography]. Davis Farmers' Market. Retrieved August 14, 2020 from <https://www.davisfarmersmarket.org/about-us/>

[Picture of Hoyt Street Garden] [Photograph]. Boerum Hill Association. Retrieved August 14, 2020 from <http://boerumhillassociation.org/hoyt-street-association.aspx>

[Picture of Lent Space] [Photography]. Interboro Partners. Retrieved August 11, 2020 from <http://www.interboropartners.com/projects/lentspace>

[Picture of Parc de La Villette] [Photography]. Bernard Tschumi Architects. Retrieved June 26, 2020 from <http://www.tschumi.com/projects/3/>

[Picture of Place au Changement] [Photograph]. (n.d.). Public Space. Retrieved June 28, 2020 from <https://www.publicspace.org/works/-/project/g027-square-for-a-change>

[Picture of Play'n Park] [Photography]. Jaja Architects. Retrieved August 11, 2020 from <https://www.ja-ja.dk/project/konditaget-luders/>

[Picture of SuperKOLMEMEN] [Photograph]. (n.d.). Plastique Fantastique. Retrieved June 13, 2020 from <https://plastique-fantastique.de/superKOLMEMEN>

[Picture of Sky Garden] [Photograph]. So? Architecture. Retrieved June 13, 2020 from <https://www.soistanbul.com/sky-garden>

[Picture of Whispering Dishes] [Photograph]. Gehl Architects. Retrieved June 13, 2020 from <https://gehlpeople.com/projects/transforming-san-francisco-busiesttransit-corridor/>

Provisional [Def 1]. In Merriam Webster Online Retrieved November 15, 2018 from <https://www.merriam-webster.com/dictionary/provisional>

Public. [Def. 1]. (n.d.). In Webster's 1913. Retrieved February 19, 2020 from <https://www.websters1913.com/words/Public>

Rapoport, A. (2005). Culture, architecture, and design. Chicago: Locke Science Publishing Company.

Rivlin, L. G. & Windsor, A. (1986). Found spaces and users' needs. Paper presented at 21st International Congress of Applied Psychology. Jerusalem, Israel.

Rynasiewicz, R. (2014). Newton's Views on Space, Time, and Motion. In Edward N. Zalta (ed.) The Stanford Encyclopedia of Philosophy (Summer 2014 Edition). Retrieved May 25, 2020 from <https://plato.stanford.edu/archives/sum2014/entries/newton-stm/>

- Sennett, R. (1974). *The fall of public man*. New York: WW Norton & Company.
- Sitte, C. (1889, 2006). *City Planning According to Artistic Principles*. In G. R. Collins & C. Collins (Authors), *Camillo Sitte: The birth of modern city planning* (pp. 129-332). Mineola, NY: Dover.
- Souza, E. (2011, January 09). AD Classics: Parc de la Villette / Bernard Tschumi Architects. Retrieved August 11, 2020 from <https://www.archdaily.com/92321/ad-classics-parc-de-la-villette-bernard-tschumi> (ISSN 0719-8884)
- Stevens, Q., & Ambler, M. (2010). Europe's city beaches as post-Fordist placemaking. *Journal of Urban Design*, 15(4), 515-537.
- Strasser, M. (n.d.). [Picture of Add-on 20 Höhenmeter] [Photography]. Add-On. Retrieved June 13, 2020 from <http://www.add-on.at/side134-6.html>
- Superkilen / Topotek 1 + BIG Architects + Superflex. (2012). ArchDaily. Retrieved July 21, 2020 from <https://www.archdaily.com/286223/superkilen-topotek-1-big-architects-superflex> (ISSN 0719-8884).
- Taksim Pavilion / IND [Inter.National.Design]. (2020). ArchDaily. Retrieved 13 Jul 2020 from <https://www.archdaily.com/934719/taksim-pavilion-ind-inteationaesign/> (ISSN 0719-8884)
- TANDEM: Energy Sovereignty and Technology in Public Space. (n.d.). Creática ONG. Retrieved July 13, 2020 from <https://www.creatica.org/project/tandem/>
- Temel, R. (2006). The temporary in the city. In R. Temel & F. Haydn, (Eds.), *Temporary urban spaces: concepts for the use of city spaces*. Basel: Birkhäuser.
- Temporary [Def 1]. In Merriam 1913. Retrieved November 15, 2018 from <https://www.websters1913.com/words/Temporary>

Temporary public space for Malta Festival Poznań 2016 on Plac Wolności. (n.d.). Atelier Starzak Strebicki. Retrieved June 13, 2020 from <http://www.starzakstrebicki.eu/en/project/malta-festival-poznan-2015-2/>

Till, K. (2013). [Picture of Granby Park] [Photograph]. Retrieved June 26, 2020 from [http://mural.maynoothuniversity.ie/12255/1/Till\\_Improvisational\\_2015.pdf](http://mural.maynoothuniversity.ie/12255/1/Till_Improvisational_2015.pdf)

Tomas van Houtryve. [Picture of Paris Plage] [Photograph]. Retrieved August 15, 2020 from <https://www.nytimes.com/2006/08/01/world/europe/01france.html>

Trancik, R. (1986). Finding lost space: theories of urban design. John Wiley & Sons.

Transforming San Francisco's Busiest Transit Corridor. (n.d.). Gehl Architects. Retrieved June 13, 2020 from <https://gehlpeople.com/projects/transforming-san-franciscos-busiest-transit-corridor/>

Tschumi, B. (1996). Architecture and disjunction. Cambridge, Massachusetts: MIT Press.

Turning point. [Def 1] In Lexico. Retrieved June 20, 2020 from [https://www.lexico.com/definition/turning\\_point](https://www.lexico.com/definition/turning_point)

Urhahn Urban Design. (2011). The spontaneous city. Amsterdam: BIS Publishers.

Use. [Def 1]. In Webster 1913. Retrieved November 30, 2019 from <https://www.websters1913.com/words/Use>

Vintiner, D. (n.d.). [Picture of Folly for Flyover] [Photography]. Retrieved July 13, 2020 from <https://assemblestudio.co.uk/projects/folly-for-a-flyover>

Whyte, W. H. (1980). *The social life of small urban spaces*. New York: Project for Public Spaces.

Wunderlich, F. M. (2013). Place-temporality and urban place-rhythms in urban analysis and design: An aesthetic akin to music. *Journal of Urban Design*, 18(3), 383-408.

Yıldırım, S. (2013). *Urban parasites: re-appropriation of interstitial spaces in architecture through the act of graffiti*. Master Thesis, METU, Ankara, Turkey. Retrieved from <http://etd.lib.metu.edu.tr/upload/12616383/index.pdf>